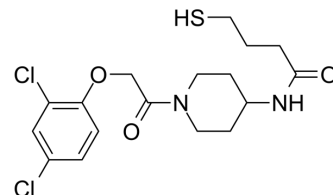


## K-Ras(G12C) inhibitor 6

Cat. No.:	HY-107841
CAS No.:	2060530-16-5
Molecular Formula:	C <sub>17</sub> H <sub>22</sub> Cl <sub>2</sub> N <sub>2</sub> O <sub>3</sub> S
Molecular Weight:	405.34
Target:	Ras
Pathway:	GPCR/G Protein
Storage:	Please store the product under the recommended conditions in the Certificate of Analysis.



### BIOLOGICAL ACTIVITY

Description	K-Ras(G12C) inhibitor 6 is an irreversible, allosteric inhibitor of the K-Ras(G12C) <sup>[1]</sup> .
IC <sub>50</sub> & Target	K-Ras(G12C)

### REFERENCES

[1]. Ostrem JM, et al. K-Ras(G12C) inhibitors allosterically control GTP affinity and effector interactions. Nature. 2013 Nov 28;503(7477):548-51.

**Caution: Product has not been fully validated for medical applications. For research use only.**

Tel: 609-228-6898

Fax: 609-228-5909

E-mail: tech@MedChemExpress.com

Address: 1 Deer Park Dr, Suite Q, Monmouth Junction, NJ 08852, USA