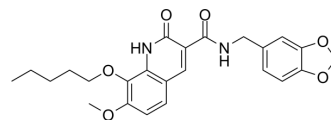


JTE-907

Cat. No.:	HY-103325
CAS No.:	282089-49-0
Molecular Formula:	C ₂₄ H ₂₆ N ₂ O ₆
Molecular Weight:	438.47
Target:	Cannabinoid Receptor
Pathway:	GPCR/G Protein; Neuronal Signaling
Storage:	4°C, stored under nitrogen * In solvent : -80°C, 6 months; -20°C, 1 month (stored under nitrogen)



SOLVENT & SOLUBILITY

In Vitro

DMSO : 125 mg/mL (285.08 mM; Need ultrasonic)

Concentration	Solvent	Mass		
		1 mg	5 mg	10 mg
Preparing Stock Solutions	1 mM	2.2807 mL	11.4033 mL	22.8066 mL
	5 mM	0.4561 mL	2.2807 mL	4.5613 mL
	10 mM	0.2281 mL	1.1403 mL	2.2807 mL

Please refer to the solubility information to select the appropriate solvent.

BIOLOGICAL ACTIVITY

Description

JTE-907 is a highly selective, orally active CB2 receptor inverse agonist and exerts anti-inflammatory effects in vivo^[1].

REFERENCES

[1]. Ueda Y, et al. Involvement of cannabinoid CB(2) receptor-mediated response and efficacy of cannabinoid CB(2) receptor inverse agonist, JTE-907, in cutaneous inflammation in mice. *Eur J Pharmacol.* 2005 Sep 27;520(1-3):164-71.

Caution: Product has not been fully validated for medical applications. For research use only.

Tel: 609-228-6898

Fax: 609-228-5909

E-mail: tech@MedChemExpress.com

Address: 1 Deer Park Dr, Suite Q, Monmouth Junction, NJ 08852, USA