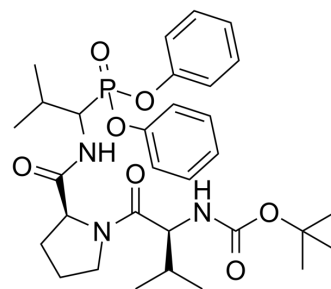


JO146

Cat. No.:	HY-144820		
CAS No.:	130727-21-8		
Molecular Formula:	C ₃₁ H ₄₄ N ₃ O ₇ P		
Molecular Weight:	601.67		
Target:	Ser/Thr Protease		
Pathway:	Metabolic Enzyme/Protease		
Storage:	Powder	-20°C	3 years
		4°C	2 years
	In solvent	-80°C	6 months
		-20°C	1 month



SOLVENT & SOLUBILITY

In Vitro

DMSO : 100 mg/mL (166.20 mM; Need ultrasonic)

Concentration	Solvent	Mass		
		1 mg	5 mg	10 mg
Preparing Stock Solutions	1 mM	1.6620 mL	8.3102 mL	16.6204 mL
	5 mM	0.3324 mL	1.6620 mL	3.3241 mL
	10 mM	0.1662 mL	0.8310 mL	1.6620 mL

Please refer to the solubility information to select the appropriate solvent.

In Vivo

- Add each solvent one by one: 10% DMSO >> 40% PEG300 >> 5% Tween-80 >> 45% saline
Solubility: 2.5 mg/mL (4.16 mM); Clear solution; Need ultrasonic
- Add each solvent one by one: 10% DMSO >> 90% (20% SBE-β-CD in saline)
Solubility: 2.5 mg/mL (4.16 mM); Clear solution; Need ultrasonic
- Add each solvent one by one: 10% DMSO >> 90% corn oil
Solubility: 2.5 mg/mL (4.16 mM); Clear solution; Need ultrasonic

BIOLOGICAL ACTIVITY

Description

JO146 is a Chlamydia trachomatis high temperature requirement A (CtHtrA) protease inhibitor with IC₅₀s of 21.86 and 1.15 μM for CtHtrA and human neutrophil elastase (HNE), respectively. JO146 can be used to inhibit bacterial infections^[1].

REFERENCES

Caution: Product has not been fully validated for medical applications. For research use only.

Tel: 609-228-6898

Fax: 609-228-5909

E-mail: tech@MedChemExpress.com

Address: 1 Deer Park Dr, Suite Q, Monmouth Junction, NJ 08852, USA