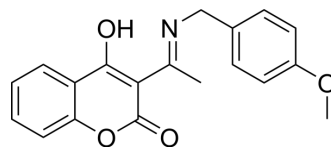


JB062

Cat. No.:	HY-152206
CAS No.:	2417988-00-0
Molecular Formula:	C ₁₉ H ₁₇ NO ₄
Molecular Weight:	323.34
Target:	Myosin
Pathway:	Cytoskeleton
Storage:	Please store the product under the recommended conditions in the Certificate of Analysis.



BIOLOGICAL ACTIVITY

Description	JB062 is a nonmuscle myosin inhibitor with IC ₅₀ values of 1.6, 5.4, and >100 μM for Skeletal muscle myosin, Cardiac muscle myosin, and Smooth muscle myosin II, respectively. JB062 has cytotoxic to human cancer cells but not normal cells. JB062 can be used in research of muscle spasticity, chronic musculoskeletal pain, and hypertrophic cardiomyopathy ^[1] .
IC₅₀ & Target	IC ₅₀ : 1.6 μM (Skeletal muscle myosin), 5.4 μM (Cardiac muscle myosin), and >100 μM (Smooth muscle myosin II) ^[1]
In Vitro	JB062 (compound 6b; 40 μM; 24 h) inhibits cytokinesis in Cos-7 cells ^[1] . JB062 (COS-7 cells) has cytotoxic to human cancer cells but not normal cells with a CC ₁₀ value of 36 μM ^[1] . MCE has not independently confirmed the accuracy of these methods. They are for reference only.

REFERENCES

[1]. Smith JD, et, al. Isoform selectivities of novel 4-hydroxycoumarin imines as inhibitors of myosin II. Eur J Med Chem. 2022 Dec 12;247:115008.

Caution: Product has not been fully validated for medical applications. For research use only.

Tel: 609-228-6898

Fax: 609-228-5909

E-mail: tech@MedChemExpress.com

Address: 1 Deer Park Dr, Suite Q, Monmouth Junction, NJ 08852, USA