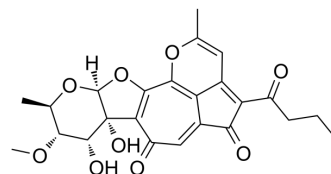


## Isatropolone A

Cat. No.:	HY-130993
CAS No.:	2097813-40-4
Molecular Formula:	C <sub>24</sub> H <sub>24</sub> O <sub>9</sub>
Molecular Weight:	456.44
Target:	Parasite
Pathway:	Anti-infection
Storage:	Please store the product under the recommended conditions in the Certificate of Analysis.



### BIOLOGICAL ACTIVITY

Description	Isatropolone A, a natural product containing a 1,5-diketone moiety, is reisolated from <i>Streptomyces</i> Gö66. Isatropolone A shows potent activity against <i>Leishmania donovani</i> with an IC <sub>50</sub> of 0.5 μM <sup>[1]</sup> .
In Vitro	Isatropolone A has an IC <sub>50</sub> of 89.8 μM in L6 cells <sup>[1]</sup> . MCE has not independently confirmed the accuracy of these methods. They are for reference only.

### REFERENCES

[1]. Xiaofeng Cai, et al. Structure and Biosynthesis of Isatropolones, Bioactive Amine-Scavenging Fluorescent Natural Products from *Streptomyces* Gö66. *Angew Chem Int Ed Engl.* 2017 Apr 24;56(18):4945-4949.

**Caution: Product has not been fully validated for medical applications. For research use only.**

Tel: 609-228-6898

Fax: 609-228-5909

E-mail: tech@MedChemExpress.com

Address: 1 Deer Park Dr, Suite Q, Monmouth Junction, NJ 08852, USA