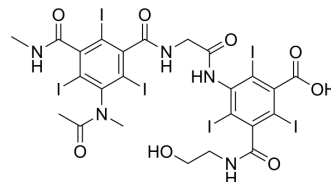


loxaglic acid

Cat. No.:	HY-106586
CAS No.:	59017-64-0
Molecular Formula:	C ₂₄ H ₂₁ I ₆ N ₅ O ₈
Molecular Weight:	1268.88
Target:	Biochemical Assay Reagents
Pathway:	Others
Storage:	Please store the product under the recommended conditions in the Certificate of Analysis.



BIOLOGICAL ACTIVITY

Description	loxaglic acid (P-286) is negatively charged contrast agent, is useful as an inverse indicator for glycosaminoglycan (GAG) used in computed tomography (CT). loxaglic acid can be used for imaging of human osteoarthritic cartilage via quantitative assessment of glycosaminoglycan content ^{[1][2]} .
In Vivo	loxaglic acid is sensitive to the GAG gradient observed in cartilage and is able to measure similar concentrations of GAG ^[2] . MCE has not independently confirmed the accuracy of these methods. They are for reference only.

REFERENCES

- [1]. Gonsette RE, et, al. New contrast media in cerebral angiography: animal experiments and preliminary clinical studies. Invest Radiol. Nov-Dec 1980;15(6 Suppl):S270-4.
- [2]. Baer K, et, al. Spectral CT imaging of human osteoarthritic cartilage via quantitative assessment of glycosaminoglycan content using multiple contrast agents. APL Bioeng. 2021 Apr 1;5(2):026101.

Caution: Product has not been fully validated for medical applications. For research use only.

Tel: 609-228-6898

Fax: 609-228-5909

E-mail: tech@MedChemExpress.com

Address: 1 Deer Park Dr, Suite Q, Monmouth Junction, NJ 08852, USA