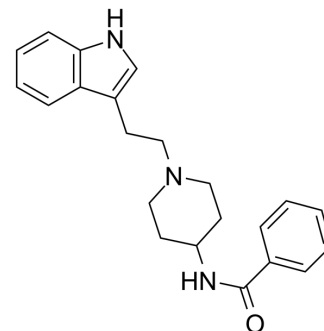


Indoramin

Cat. No.:	HY-12760		
CAS No.:	26844-12-2		
Molecular Formula:	C ₂₂ H ₂₅ N ₃ O		
Molecular Weight:	347.45		
Target:	Adrenergic Receptor		
Pathway:	GPCR/G Protein; Neuronal Signaling		
Storage:	Powder	-20°C	3 years
		4°C	2 years
	In solvent	-80°C	6 months
		-20°C	1 month



SOLVENT & SOLUBILITY

In Vitro

DMSO : 7.69 mg/mL (22.13 mM; ultrasonic and warming and heat to 60°C)

Concentration	Mass		
	1 mg	5 mg	10 mg
1 mM	2.8781 mL	14.3906 mL	28.7811 mL
5 mM	0.5756 mL	2.8781 mL	5.7562 mL
10 mM	0.2878 mL	1.4391 mL	2.8781 mL

Please refer to the solubility information to select the appropriate solvent.

BIOLOGICAL ACTIVITY

Description

Indoramin is an orally active antihypertensive agent. Indoramin is also selective for the α_{1A} -adrenoceptor^[1].

REFERENCES

[1]. M Eltze, et al. In functional experiments, risperidone is selective, not for the B, but for the A subtype of alpha 1-adrenoceptors. Eur J Pharmacol. 1996 Jan 4;295(1):69-73.

Caution: Product has not been fully validated for medical applications. For research use only.

Tel: 609-228-6898

Fax: 609-228-5909

E-mail: tech@MedChemExpress.com

Address: 1 Deer Park Dr, Suite Q, Monmouth Junction, NJ 08852, USA