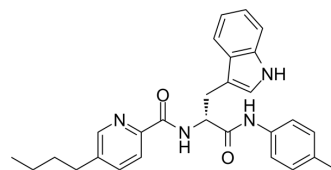


## Indoluidin E

|                    |   |
|--------------------|---|
| Cat. No.:          | HY-139825   |
| CAS No.:           | 2763081-76-9  |
| Molecular Formula: | C <sub>28</sub> H <sub>30</sub> N <sub>4</sub> O <sub>2</sub>                             |
| Molecular Weight:  | 454.56  |
| Target:            | Dihydroorotate Dehydrogenase  |
| Pathway:           | Metabolic Enzyme/Protease   |
| Storage:           | Please store the product under the recommended conditions in the Certificate of Analysis. |



### BIOLOGICAL ACTIVITY

|             |  |
|-------------|--|
| Description | Indoluidin E selectively inhibits DHODH and suppresses cancer cell growth. |
|-------------|--|

### REFERENCES

[1]. Kawatani M, et al. Identification of Dihydroorotate Dehydrogenase Inhibitors Indoluidins That Inhibit Cancer Cell Growth. ACS Chem Biol. 2021 Nov 19;16(11):2570-2580.

**Caution: Product has not been fully validated for medical applications. For research use only.**

Tel: 609-228-6898

Fax: 609-228-5909

E-mail: tech@MedChemExpress.com

Address: 1 Deer Park Dr, Suite Q, Monmouth Junction, NJ 08852, USA