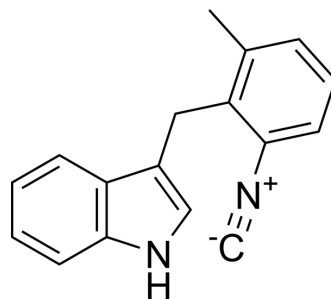


## IMBI

Cat. No.:	HY-149762
CAS No.:	2785359-14-8
Molecular Formula:	C <sub>17</sub> H <sub>14</sub> N <sub>2</sub>
Molecular Weight:	246.31
Target:	Bacterial
Pathway:	Anti-infection
Storage:	Please store the product under the recommended conditions in the Certificate of Analysis.



## BIOLOGICAL ACTIVITY

### Description

IMBI (compound 32) is an antibacterial agent that inhibits quorum sensing (QS) against drug-resistant pathogens. IMBI inhibits biofilm formation of *Salmonella marcescens* and restores or increases its susceptibility to antimicrobial drugs<sup>[1]</sup>.

## REFERENCES

[1]. Wang J et al. Developing 3-(2-Isocyano-6-methylbenzyl)-1H-indole Derivatives to Enhance the Susceptibility of *Serratia marcescens* by Occluding Quorum Sensing. *ACS Infect Dis.* 2023 Nov 16.

**Caution: Product has not been fully validated for medical applications. For research use only.**

Tel: 609-228-6898

Fax: 609-228-5909

E-mail: tech@MedChemExpress.com

Address: 1 Deer Park Dr, Suite Q, Monmouth Junction, NJ 08852, USA