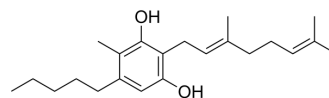


## IL-1 $\beta$ -IN-2

Cat. No.:	HY-149282
CAS No.:	2242896-76-8
Molecular Formula:	C <sub>22</sub> H <sub>34</sub> O <sub>2</sub>
Molecular Weight:	330.5
Target:	Interleukin Related
Pathway:	Immunology/Inflammation
Storage:	Please store the product under the recommended conditions in the Certificate of Analysis.



### BIOLOGICAL ACTIVITY

<b>Description</b>	IL-1 $\beta$ -IN-2, cannabigerol derivative, is a potent IL-1 $\beta$ inhibitor. IL-1 $\beta$ -IN-2 has anti-inflammatory and pain-resolving properties <sup>[1]</sup> .								
<b>In Vivo</b>	<p>IL-1<math>\beta</math>-IN-2 (compound 11; 10 and 25 mg/kg; i.p.; female Sabra mice) improves swelling and pain sensation in a dose-dependent manner<sup>[1]</sup>.</p> <p>MCE has not independently confirmed the accuracy of these methods. They are for reference only.</p> <table border="1"> <tr> <td>Animal Model:</td> <td>female Sabra mice, 7-8 weeks old<sup>[1]</sup></td> </tr> <tr> <td>Dosage:</td> <td>10 and 25 mg/kg</td> </tr> <tr> <td>Administration:</td> <td>intraperitoneal injection</td> </tr> <tr> <td>Result:</td> <td>Reduced swelling and pain sensation. Reduced plasma TNF<math>\alpha</math> and IL-1<math>\beta</math>.</td> </tr> </table>	Animal Model:	female Sabra mice, 7-8 weeks old <sup>[1]</sup>	Dosage:	10 and 25 mg/kg	Administration:	intraperitoneal injection	Result:	Reduced swelling and pain sensation. Reduced plasma TNF $\alpha$ and IL-1 $\beta$ .
Animal Model:	female Sabra mice, 7-8 weeks old <sup>[1]</sup>								
Dosage:	10 and 25 mg/kg								
Administration:	intraperitoneal injection								
Result:	Reduced swelling and pain sensation. Reduced plasma TNF $\alpha$ and IL-1 $\beta$ .								

### REFERENCES

[1]. Lavi Y, et, al. Novel Synthesis of C-Methylated Phytocannabinoids Bearing Anti-inflammatory Properties. J Med Chem. 2023 Apr 27;66(8):5536-5549.

**Caution: Product has not been fully validated for medical applications. For research use only.**

Tel: 609-228-6898

Fax: 609-228-5909

E-mail: tech@MedChemExpress.com

Address: 1 Deer Park Dr, Suite Q, Monmouth Junction, NJ 08852, USA