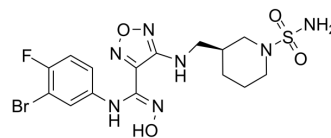


## IDO1-IN-20

Cat. No.:	HY-146215
CAS No.:	2415246-15-8
Molecular Formula:	C <sub>15</sub> H <sub>19</sub> BrFN <sub>7</sub> O <sub>4</sub> S
Molecular Weight:	492.32
Target:	Indoleamine 2,3-Dioxygenase (IDO)
Pathway:	Metabolic Enzyme/Protease
Storage:	Please store the product under the recommended conditions in the Certificate of Analysis.



## BIOLOGICAL ACTIVITY

### Description

Hy-146215 is an enzyme that catalyzes the oxidative metabolism of tryptophan. It can immunosuppress tumors in the tumor microenvironment.

## REFERENCES

[1]. Song X, et al. Design, synthesis, and biological evaluation of 1,2,5-oxadiazole-3-carboximidamide derivatives as novel indoleamine-2,3-dioxygenase 1 inhibitors. *Eur J Med Chem.* 2020 Mar 1;189:112059.

**Caution: Product has not been fully validated for medical applications. For research use only.**

Tel: 609-228-6898

Fax: 609-228-5909

E-mail: tech@MedChemExpress.com

Address: 1 Deer Park Dr, Suite Q, Monmouth Junction, NJ 08852, USA