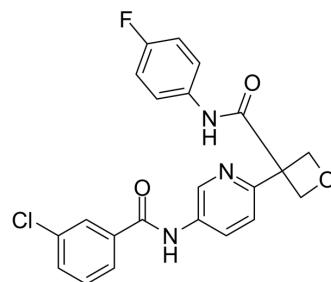


## IDO1-IN-11

Cat. No.:	HY-145332
CAS No.:	2306411-34-5
Molecular Formula:	C <sub>22</sub> H <sub>17</sub> ClFN <sub>3</sub> O <sub>3</sub>
Molecular Weight:	425.84
Target:	Indoleamine 2,3-Dioxygenase (IDO)
Pathway:	Metabolic Enzyme/Protease
Storage:	Please store the product under the recommended conditions in the Certificate of Analysis.



## BIOLOGICAL ACTIVITY

Description	IDO1-IN-11 is an IDO1 inhibitor with an IC <sub>50</sub> value of 0.6 nM.
-------------	---

## REFERENCES

[1]. White C, et al. Strategic Incorporation of Polarity in Heme-Displacing Inhibitors of Indoleamine-2,3-dioxygenase-1 (IDO1). ACS Med Chem Lett. 2020 Mar 10;11(4):550-557.

**Caution: Product has not been fully validated for medical applications. For research use only.**

Tel: 609-228-6898

Fax: 609-228-5909

E-mail: tech@MedChemExpress.com

Address: 1 Deer Park Dr, Suite Q, Monmouth Junction, NJ 08852, USA