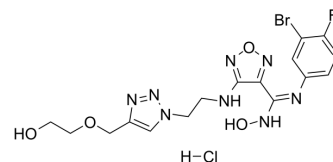


## IDO1/2-IN-1 hydrochloride

<b>Cat. No.:</b>	HY-145280A
<b>CAS No.:</b>	2310286-60-1
<b>Molecular Formula:</b>	C <sub>16</sub> H <sub>19</sub> BrClFN <sub>8</sub> O <sub>4</sub>
<b>Molecular Weight:</b>	521.73
<b>Target:</b>	Indoleamine 2,3-Dioxygenase (IDO)
<b>Pathway:</b>	Metabolic Enzyme/Protease
<b>Storage:</b>	Please store the product under the recommended conditions in the Certificate of Analysis.



### SOLVENT & SOLUBILITY

<b>In Vitro</b>	DMSO : 100 mg/mL (191.67 mM; Need ultrasonic)					
	<b>Preparing Stock Solutions</b>	<b>Solvent</b>	<b>Mass</b>	<b>1 mg</b>	<b>5 mg</b>	<b>10 mg</b>
		<b>Concentration</b>				
		<b>1 mM</b>		1.9167 mL	9.5835 mL	19.1670 mL
		<b>5 mM</b>		0.3833 mL	1.9167 mL	3.8334 mL
	<b>10 mM</b>		0.1917 mL	0.9584 mL	1.9167 mL	
Please refer to the solubility information to select the appropriate solvent.						
<b>In Vivo</b>	1. Add each solvent one by one: 10% DMSO >> 40% PEG300 >> 5% Tween-80 >> 45% saline Solubility: 2.5 mg/mL (4.79 mM); Clear solution; Need ultrasonic					
	2. Add each solvent one by one: 10% DMSO >> 90% (20% SBE-β-CD in saline) Solubility: 2.5 mg/mL (4.79 mM); Clear solution; Need ultrasonic					
	3. Add each solvent one by one: 10% DMSO >> 90% corn oil Solubility: 2.5 mg/mL (4.79 mM); Clear solution; Need ultrasonic					

### BIOLOGICAL ACTIVITY

<b>Description</b>	IDO1/2-IN-1 hydrochloride (compound 4t) is the first potent IDO1/IDO2 dual inhibitor with IC <sub>50</sub> s of 28 nM and 144 nM for IDO1 and IDO2, respectively. IDO1/2-IN-1 hydrochloride exhibits antitumor activities. Orally active <sup>[1]</sup> .
--------------------	---

### REFERENCES

[1]. He X, et al. Discovery of the First Potent IDO1/IDO2 Dual Inhibitors: A Promising Strategy for Cancer Immunotherapy. J Med Chem. 2021;64(24):17950-17968.

---

**Caution: Product has not been fully validated for medical applications. For research use only.**

Tel: 609-228-6898

Fax: 609-228-5909

E-mail: [tech@MedChemExpress.com](mailto:tech@MedChemExpress.com)

Address: 1 Deer Park Dr, Suite Q, Monmouth Junction, NJ 08852, USA