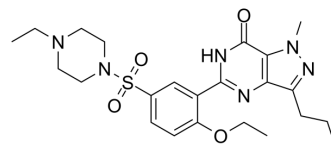


Homo Sildenafil

Cat. No.:	HY-131100
CAS No.:	642928-07-2
Molecular Formula:	C ₂₃ H ₃₂ N ₆ O ₄ S
Molecular Weight:	488.6
Target:	Phosphodiesterase (PDE)
Pathway:	Metabolic Enzyme/Protease
Storage:	Please store the product under the recommended conditions in the Certificate of Analysis.



SOLVENT & SOLUBILITY

In Vitro

DMSO : 50 mg/mL (102.33 mM; ultrasonic and warming and heat to 60°C)

Preparing Stock Solutions	Solvent Concentration	Mass		
		1 mg	5 mg	10 mg
	1 mM	2.0467 mL	10.2333 mL	20.4666 mL
	5 mM	0.4093 mL	2.0467 mL	4.0933 mL
	10 mM	0.2047 mL	1.0233 mL	2.0467 mL

Please refer to the solubility information to select the appropriate solvent.

BIOLOGICAL ACTIVITY

Description

Homo Sildenafil, an analog of Sildenafil, acts as a phosphodiesterase inhibitor^[1].

REFERENCES

[1]. Jackie D Corbin, et al. Vardenafil: Structural Basis for Higher Potency Over Sildenafil in Inhibiting cGMP-specific phosphodiesterase-5 (PDE5). *Neurochem Int.* 2004 Nov;45(6):859-63.

Caution: Product has not been fully validated for medical applications. For research use only.

Tel: 609-228-6898

Fax: 609-228-5909

E-mail: tech@MedChemExpress.com

Address: 1 Deer Park Dr, Suite Q, Monmouth Junction, NJ 08852, USA