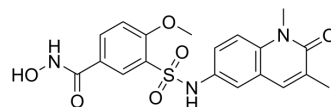


HDAC8/BRPF1-IN-1

Cat. No.:	HY-151366
CAS No.:	2484255-85-6
Molecular Formula:	C ₁₉ H ₁₉ N ₃ O ₆ S
Molecular Weight:	417.44
Target:	HDAC; Epigenetic Reader Domain
Pathway:	Cell Cycle/DNA Damage; Epigenetics
Storage:	Please store the product under the recommended conditions in the Certificate of Analysis.



BIOLOGICAL ACTIVITY

Description	HDAC8/BRPF1-IN-1 (Compound 23a) is a dual inhibitor of HDAC8 and BRPF1 with an IC ₅₀ of 443 nM against human HDAC8 and a K _d of 67 nM against human BRPF1. HDAC8/BRPF1-IN-1 shows low in vitro activity against HDAC1 and 6 ^[1] .									
IC₅₀ & Target	hHDAC8 443 nM (IC ₅₀)	hBRPF1 67 nM (K _i)								
In Vitro	<p>HDAC8/BRPF1-IN-1 (Compound 23a) (4-100 μM; 24 h) shows antiproliferative activity against acute myeloid leukemia cells^[1]. MCE has not independently confirmed the accuracy of these methods. They are for reference only.</p> <p>Cell Proliferation Assay^[1]</p> <table border="1"> <tr> <td>Cell Line:</td> <td>Acute myeloid leukemia cells THP-1 and HL60</td> </tr> <tr> <td>Concentration:</td> <td>4, 20 and 100 μM</td> </tr> <tr> <td>Incubation Time:</td> <td>24 h</td> </tr> <tr> <td>Result:</td> <td>Inhibited THP-1 and HL60 cells growth.</td> </tr> </table>		Cell Line:	Acute myeloid leukemia cells THP-1 and HL60	Concentration:	4, 20 and 100 μM	Incubation Time:	24 h	Result:	Inhibited THP-1 and HL60 cells growth.
Cell Line:	Acute myeloid leukemia cells THP-1 and HL60									
Concentration:	4, 20 and 100 μM									
Incubation Time:	24 h									
Result:	Inhibited THP-1 and HL60 cells growth.									

REFERENCES

[1]. Ghazy E, et al. Design, synthesis, and biological evaluation of dual targeting inhibitors of histone deacetylase 6/8 and bromodomain BRPF1. *Eur J Med Chem.* 2020 Aug 15;200:112338.

Caution: Product has not been fully validated for medical applications. For research use only.

Tel: 609-228-6898

Fax: 609-228-5909

E-mail: tech@MedChemExpress.com

Address: 1 Deer Park Dr, Suite Q, Monmouth Junction, NJ 08852, USA