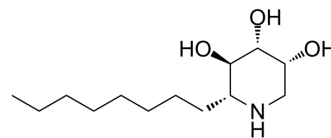


Glucocerebrosidase-IN-1

Cat. No.:	HY-147976
CAS No.:	2279945-76-3
Molecular Formula:	C ₁₃ H ₂₇ NO ₃
Molecular Weight:	245.36
Target:	Glucosidase
Pathway:	Metabolic Enzyme/Protease
Storage:	Please store the product under the recommended conditions in the Certificate of Analysis.



BIOLOGICAL ACTIVITY

Description	Glucocerebrosidase-IN-1 (compound 11a) is a potent and selective GCase (glucocerebrosidase) inhibitor, with an IC ₅₀ of 29.3 μM and a K _i of 18.5 μM. Glucocerebrosidase-IN-1 can be used for the research of Gaucher disease (GD) and Parkinson's disease (PD) ^[1] .
IC ₅₀ & Target	IC ₅₀ : 29.3 ± 1.8 μM (Glucocerebrosidase) ^[1]
In Vitro	Glucocerebrosidase-IN-1 (compound 11a) is able to enhance GCase activity 1.8-fold in fibroblasts bearing the homozygous L444P mutation ^[1] . MCE has not independently confirmed the accuracy of these methods. They are for reference only.

REFERENCES

[1]. Clemente F, et al. Glucocerebrosidase (GCase) activity modulation by 2-alkyl trihydroxypiperidines: Inhibition and pharmacological chaperoning. *Bioorg Chem.* 2020 May;98:103740.

Caution: Product has not been fully validated for medical applications. For research use only.

Tel: 609-228-6898

Fax: 609-228-5909

E-mail: tech@MedChemExpress.com

Address: 1 Deer Park Dr, Suite Q, Monmouth Junction, NJ 08852, USA