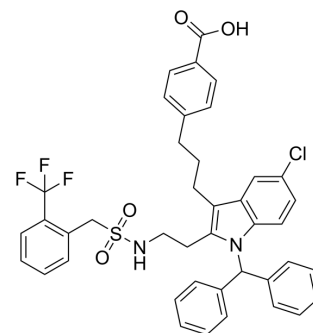


## Giripladib

<b>Cat. No.:</b>	HY-14952		
<b>CAS No.:</b>	865200-20-0		
<b>Molecular Formula:</b>	C <sub>41</sub> H <sub>36</sub> ClF <sub>3</sub> N <sub>2</sub> O <sub>4</sub> S		
<b>Molecular Weight:</b>	745.25		
<b>Target:</b>	Phospholipase		
<b>Pathway:</b>	Metabolic Enzyme/Protease		
<b>Storage:</b>	Powder	-20°C	3 years
	In solvent	-80°C	6 months
		-20°C	1 month



### BIOLOGICAL ACTIVITY

<b>Description</b>	Giripladib (PLA-695) is a indole-based inhibitor of cytosolic phospholipase A <sub>2</sub> (cPLA <sub>2</sub> ). Giripladib can be used for osteoarthritis and breast cancer research <sup>[1][2]</sup> .
<b>IC<sub>50</sub> &amp; Target</b>	cPLA <sub>2</sub> α

### REFERENCES

- [1]. Kokotos G, et al. Inhibition of group IVA cytosolic phospholipase A<sub>2</sub> by thiazolyl ketones in vitro, ex vivo, and in vivo. *J Med Chem.* 2014 Sep 25;57(18):7523-35.
- [2]. Liu S, et al. A novel lncRNA ROPM-mediated lipid metabolism governs breast cancer stem cell properties. *J Hematol Oncol.* 2021 Oct 29;14(1):178.

**Caution: Product has not been fully validated for medical applications. For research use only.**

Tel: 609-228-6898

Fax: 609-228-5909

E-mail: tech@MedChemExpress.com

Address: 1 Deer Park Dr, Suite Q, Monmouth Junction, NJ 08852, USA