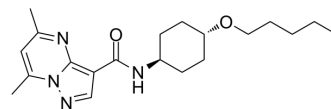


Gcase activator 1

Cat. No.:	HY-104038		
CAS No.:	1919820-28-2		
Molecular Formula:	C ₂₀ H ₃₀ N ₄ O ₂		
Molecular Weight:	358.48		
Target:	Glucosidase		
Pathway:	Metabolic Enzyme/Protease		
Storage:	Powder	-20°C	3 years
		4°C	2 years
	In solvent	-80°C	2 years
		-20°C	1 year



SOLVENT & SOLUBILITY

In Vitro	DMSO : 50 mg/mL (139.48 mM; Need ultrasonic)			
		Solvent Concentration	Mass	
			1 mg	5 mg
			10 mg	
Preparing Stock Solutions	1 mM	2.7896 mL	13.9478 mL	27.8956 mL
	5 mM	0.5579 mL	2.7896 mL	5.5791 mL
	10 mM	0.2790 mL	1.3948 mL	2.7896 mL
Please refer to the solubility information to select the appropriate solvent.				
In Vivo	<ol style="list-style-type: none"> Add each solvent one by one: 10% DMSO >> 40% PEG300 >> 5% Tween-80 >> 45% saline Solubility: ≥ 2.5 mg/mL (6.97 mM); Clear solution Add each solvent one by one: 10% DMSO >> 90% (20% SBE-β-CD in saline) Solubility: ≥ 2.5 mg/mL (6.97 mM); Clear solution Add each solvent one by one: 10% DMSO >> 90% corn oil Solubility: ≥ 2.5 mg/mL (6.97 mM); Clear solution 			

BIOLOGICAL ACTIVITY

Description	Gcase activator 1 is an activator of glucocerebrosidase (Gcase) extracted from patent WO 2017192841 A1 ^[1] .
IC₅₀ & Target	Gcase ^[1]

REFERENCES

Caution: Product has not been fully validated for medical applications. For research use only.

Tel: 609-228-6898

Fax: 609-228-5909

E-mail: tech@MedChemExpress.com

Address: 1 Deer Park Dr, Suite Q, Monmouth Junction, NJ 08852, USA