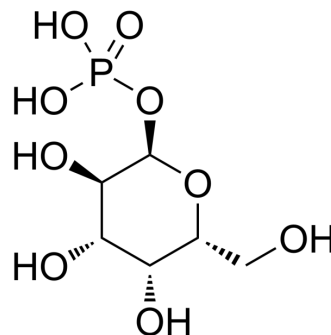


## Galactose 1-phosphate

Cat. No.:	HY-113143
CAS No.:	2255-14-3
Molecular Formula:	C <sub>6</sub> H <sub>13</sub> O <sub>9</sub> P
Molecular Weight:	260.14
Target:	Endogenous Metabolite
Pathway:	Metabolic Enzyme/Protease
Storage:	Please store the product under the recommended conditions in the Certificate of Analysis.



### BIOLOGICAL ACTIVITY

Description	Galactose 1-phosphate is an intermediate in the galactose metabolism and nucleotide sugars.
IC <sub>50</sub> & Target	Human Endogenous Metabolite

### REFERENCES

[1]. metabolism pathwaysMcCorvie TJ, et al. The structural and molecular biology of type I galactosemia: Enzymology of galactose 1-phosphate uridylyltransferase. IUBMB Life. 2011 Sep;63(9):694-700.

**Caution: Product has not been fully validated for medical applications. For research use only.**

Tel: 609-228-6898

Fax: 609-228-5909

E-mail: tech@MedChemExpress.com

Address: 1 Deer Park Dr, Suite Q, Monmouth Junction, NJ 08852, USA