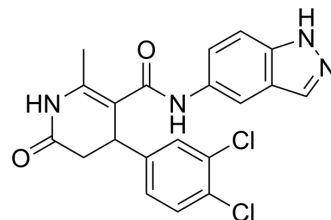


## GSK299115A

<b>Cat. No.:</b>	HY-123520
<b>CAS No.:</b>	864082-35-9
<b>Molecular Formula:</b>	C <sub>20</sub> H <sub>16</sub> Cl <sub>2</sub> N <sub>4</sub> O <sub>2</sub>
<b>Molecular Weight:</b>	415.27
<b>Target:</b>	G Protein-coupled Receptor Kinase (GRK); PKA
<b>Pathway:</b>	GPCR/G Protein; Stem Cell/Wnt
<b>Storage:</b>	Please store the product under the recommended conditions in the Certificate of Analysis.



## BIOLOGICAL ACTIVITY

### Description

GSK299115A is a G Protein-coupled Receptor Kinase (GRK) and PKA inhibitor<sup>[1]</sup>.

## REFERENCES

[1]. Homan KT, et al. Identification and structure-function analysis of subfamily selective G protein-coupled receptor kinase inhibitors. ACS Chem Biol. 2015 Jan 16;10(1):310-9.

**Caution: Product has not been fully validated for medical applications. For research use only.**

Tel: 609-228-6898

Fax: 609-228-5909

E-mail: tech@MedChemExpress.com

Address: 1 Deer Park Dr, Suite Q, Monmouth Junction, NJ 08852, USA