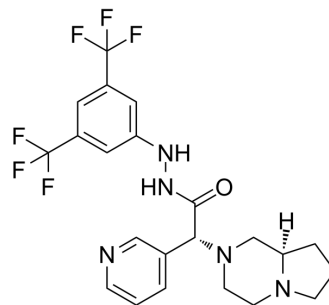


GSK1614343

Cat. No.:	HY-113906
CAS No.:	1092076-04-4
Molecular Formula:	C ₂₂ H ₂₃ F ₆ N ₅ O
Molecular Weight:	487.44
Target:	GHSR
Pathway:	GPCR/G Protein
Storage:	Please store the product under the recommended conditions in the Certificate of Analysis.



SOLVENT & SOLUBILITY

In Vitro

DMSO : ≥ 100 mg/mL (205.15 mM)
 * "≥" means soluble, but saturation unknown.

Preparing Stock Solutions	Solvent Concentration	Mass	1 mg	5 mg	10 mg
	1 mM		2.0515 mL	10.2577 mL	20.5153 mL
	5 mM		0.4103 mL	2.0515 mL	4.1031 mL
	10 mM		0.2052 mL	1.0258 mL	2.0515 mL

Please refer to the solubility information to select the appropriate solvent.

BIOLOGICAL ACTIVITY

Description

GSK1614343 is the potent antagonist of growth hormone secretagogues type 1a (GHS1a) receptors. GSK1614343 inhibits the calcium response induced by ghrelin with a pIC₅₀ value of 7.90. GSK1614343 represents a useful tool to investigate the physiological relevance of the ghrelin system in rat models^[1].

REFERENCES

[1]. Perdonà E, et al. Pharmacological characterization of the ghrelin receptor antagonist, GSK1614343 in rat RC-4B/C cells natively expressing GHS type 1a receptors. Eur J Pharmacol. 2011;650(1):178-183.

Caution: Product has not been fully validated for medical applications. For research use only.

Tel: 609-228-6898

Fax: 609-228-5909

E-mail: tech@MedChemExpress.com

Address: 1 Deer Park Dr, Suite Q, Monmouth Junction, NJ 08852, USA