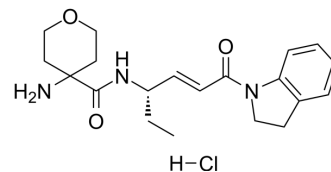


GSK-2793660

Cat. No.:	HY-112318A
CAS No.:	1613458-78-8
Molecular Formula:	C ₂₀ H ₂₈ ClN ₃ O ₃
Molecular Weight:	393.91
Target:	Cathepsin
Pathway:	Metabolic Enzyme/Protease
Storage:	-20°C, sealed storage, away from moisture * In solvent : -80°C, 6 months; -20°C, 1 month (sealed storage, away from moisture)



SOLVENT & SOLUBILITY

In Vitro	DMSO : 100 mg/mL (253.87 mM; Need ultrasonic)						
	Preparing Stock Solutions	Solvent Concentration	Mass	1 mg	5 mg	10 mg	
				1 mM	2.5387 mL	12.6933 mL	25.3865 mL
				5 mM	0.5077 mL	2.5387 mL	5.0773 mL
				10 mM	0.2539 mL	1.2693 mL	2.5387 mL
Please refer to the solubility information to select the appropriate solvent.							
In Vivo	1. Add each solvent one by one: 10% DMSO >> 40% PEG300 >> 5% Tween-80 >> 45% saline Solubility: ≥ 2.5 mg/mL (6.35 mM); Clear solution						
	2. Add each solvent one by one: 10% DMSO >> 90% (20% SBE-β-CD in saline) Solubility: ≥ 2.5 mg/mL (6.35 mM); Clear solution						
	3. Add each solvent one by one: 10% DMSO >> 90% corn oil Solubility: ≥ 2.5 mg/mL (6.35 mM); Clear solution						

BIOLOGICAL ACTIVITY

Description	GSK-2793660 is an orally active and irreversible inhibitor of Cathepsin C (CTSC). GSK-2793660 can be used for the research of bronchiectasis ^{[1][2]} .
IC ₅₀ & Target	Cathepsin C
In Vivo	GSK-2793660 is a cathepsin C (also known as dipeptidyl peptidase I enzyme) inhibitor for the reearch of cystic fibrosis, non-cystic fibrosis bronchiectasis, anti-neutrophil cytoplasmic autoantibody (ANCA)-associated vasculitis and bronchiectasis ^[1] . MCE has not independently confirmed the accuracy of these methods. They are for reference only.

REFERENCES

- [1]. Szcześniak P, et al. The Synthesis of α,α -Disubstituted α -Amino Acids via Ichikawa Rearrangement. *J Org Chem*. 2016;81(3):1057-1074.
- [2]. Miller BE, et al. Epithelial desquamation observed in a phase I study of an oral cathepsin C inhibitor (GSK2793660). *Br J Clin Pharmacol*. 2017;83(12):2813-2820.
-

Caution: Product has not been fully validated for medical applications. For research use only.

Tel: 609-228-6898

Fax: 609-228-5909

E-mail: tech@MedChemExpress.com

Address: 1 Deer Park Dr, Suite Q, Monmouth Junction, NJ 08852, USA