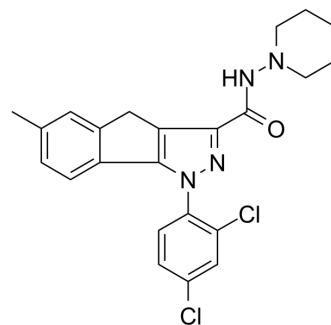


GP1a

Cat. No.: HY-110050
CAS No.: 511532-96-0
Molecular Formula: C₂₃H₂₂Cl₂N₄O
Molecular Weight: 441.35
Target: Cannabinoid Receptor
Pathway: GPCR/G Protein; Neuronal Signaling
Storage: 4°C, protect from light
 * In solvent : -80°C, 6 months; -20°C, 1 month (protect from light)



SOLVENT & SOLUBILITY

In Vitro

DMSO : 125 mg/mL (283.22 mM; Need ultrasonic)

Preparing Stock Solutions	Solvent Concentration	Mass		
		1 mg	5 mg	10 mg
	1 mM	2.2658 mL	11.3289 mL	22.6578 mL
	5 mM	0.4532 mL	2.2658 mL	4.5316 mL
	10 mM	0.2266 mL	1.1329 mL	2.2658 mL

Please refer to the solubility information to select the appropriate solvent.

BIOLOGICAL ACTIVITY

Description

GP1a is a potent agonist of cannabinoid receptor 2 (CB2). Gp1a is beneficial to skin wound healing. GP1a inhibits inflammation and fibrogenesis while promoting re-epithelialization^[1].

REFERENCES

[1]. Zhao C, et al. An enzyme-responsive Gp1a-hydrogel for skin wound healing. J Biomater Appl. 2021;36(4):714-721.

Caution: Product has not been fully validated for medical applications. For research use only.

Tel: 609-228-6898

Fax: 609-228-5909

E-mail: tech@MedChemExpress.com

Address: 1 Deer Park Dr, Suite Q, Monmouth Junction, NJ 08852, USA