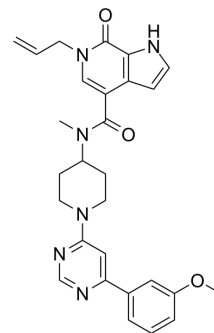


## GNE-886

Cat. No.:	HY-117865
CAS No.:	2101957-05-3
Molecular Formula:	C <sub>28</sub> H <sub>30</sub> N <sub>6</sub> O <sub>3</sub>
Molecular Weight:	498.58
Target:	Epigenetic Reader Domain
Pathway:	Epigenetics
Storage:	Please store the product under the recommended conditions in the Certificate of Analysis.



## BIOLOGICAL ACTIVITY

Description	GNE-886 (Compound 21) is a potent and selective inhibitor of Cat eye syndrome chromosome region candidate 2 bromodomain (CECR2) (BRD) with an IC <sub>50</sub> value of 0.016 μM and an EC <sub>50</sub> value of 370 nM. GNE-886 also inhibits BRD9 with an IC <sub>50</sub> value of 1.6 μM <sup>[1]</sup> .
IC <sub>50</sub> & Target	IC50: 0.016 μM (Cat eye syndrome chromosome region candidate 2 bromodomain, CECR2, BRD) <sup>[1]</sup>

## REFERENCES

[1]. Crawford TD, et al. GNE-886: A Potent and Selective Inhibitor of the Cat Eye Syndrome Chromosome Region Candidate 2 Bromodomain (CECR2). ACS Med Chem Lett. 2017 Jun 1;8(7):737-741.

**Caution: Product has not been fully validated for medical applications. For research use only.**

Tel: 609-228-6898

Fax: 609-228-5909

E-mail: tech@MedChemExpress.com

Address: 1 Deer Park Dr, Suite Q, Monmouth Junction, NJ 08852, USA