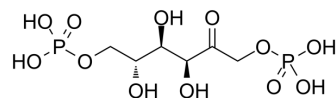


Fosfructose

Cat. No.:	HY-106950
CAS No.:	488-69-7
Molecular Formula:	C ₆ H ₁₄ O ₁₂ P ₂
Molecular Weight:	340.12
Target:	Endogenous Metabolite
Pathway:	Metabolic Enzyme/Protease
Storage:	Please store the product under the recommended conditions in the Certificate of Analysis.



BIOLOGICAL ACTIVITY

Description	Fosfructose (Diphosphofructose;Esafosfan;FDP) is a cytoprotective natural sugar phosphate for the potential treatment of cardiovascular ischemia, sickle cell anemia and asthma. It acts by stimulating anaerobic glycolysis which generates adenosine triphosphate under ischemic conditions.
IC ₅₀ & Target	Human Endogenous Metabolite

REFERENCES

[1]. Folkesson HG, et al. Fosfructose (Questcor). IDrugs. 2001 Dec;4(12):1401-7.

Caution: Product has not been fully validated for medical applications. For research use only.

Tel: 609-228-6898

Fax: 609-228-5909

E-mail: tech@MedChemExpress.com

Address: 1 Deer Park Dr, Suite Q, Monmouth Junction, NJ 08852, USA