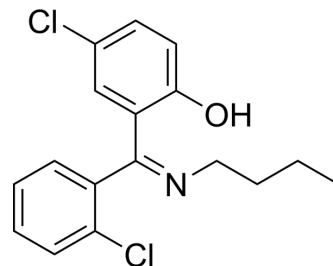


Fengabine

Cat. No.:	HY-123478
CAS No.:	80018-06-0
Molecular Formula:	C ₁₇ H ₁₇ Cl ₂ NO
Molecular Weight:	322.23
Target:	GABA Receptor
Pathway:	Membrane Transporter/Ion Channel; Neuronal Signaling
Storage:	Please store the product under the recommended conditions in the Certificate of Analysis.



BIOLOGICAL ACTIVITY

Description	Fengabine is a GABAergic antidepressant agent. Fengabine can be used for the research of depression ^[1] .								
In Vivo	<p>Fengabine (50 mg/kg; i.p.; 2 days) prevents completely the learned helplessness induced by the unavoidable shock^[1]. Fengabine (150 mg/kg; i.p) decreases the percentage of time spent. Fengabine (25~50 mg/kg; i.p.) reverses the deficit in learning the step-down avoidance task^[1].</p> <p>MCE has not independently confirmed the accuracy of these methods. They are for reference only.</p> <table border="1"> <tr> <td>Animal Model:</td> <td>Rats^[1]</td> </tr> <tr> <td>Dosage:</td> <td>50 mg/kg</td> </tr> <tr> <td>Administration:</td> <td>I.p.</td> </tr> <tr> <td>Result:</td> <td>Prevented completely the learned helplessness induced by the unavoidable shock.</td> </tr> </table>	Animal Model:	Rats ^[1]	Dosage:	50 mg/kg	Administration:	I.p.	Result:	Prevented completely the learned helplessness induced by the unavoidable shock.
Animal Model:	Rats ^[1]								
Dosage:	50 mg/kg								
Administration:	I.p.								
Result:	Prevented completely the learned helplessness induced by the unavoidable shock.								

REFERENCES

- [1]. Ascalone V, et al. Determination of the GABAergic antidepressant drug fengabine and some of its metabolites in plasma by capillary gas chromatography with electron-capture detection. *J Chromatogr.* 1989;490(1):81-90.
- [2]. Lloyd KG, et al. Fengabine, a novel antidepressant GABAergic agent. I. Activity in models for antidepressant drugs and psychopharmacological profile. *J Pharmacol Exp Ther.* 1987;241(1):245-250.

Caution: Product has not been fully validated for medical applications. For research use only.

Tel: 609-228-6898

Fax: 609-228-5909

E-mail: tech@MedChemExpress.com

Address: 1 Deer Park Dr, Suite Q, Monmouth Junction, NJ 08852, USA