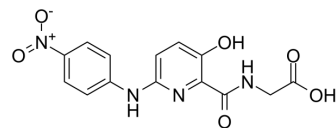


FTO-IN-6

Cat. No.:	HY-145238		
CAS No.:	2968347-63-7		
Molecular Formula:	C ₁₄ H ₁₂ N ₄ O ₆		
Molecular Weight:	332.27		
Target:	Fat Mass and Obesity-associated Protein (FTO)		
Pathway:	Metabolic Enzyme/Protease		
Storage:	Powder	-20°C	3 years
		4°C	2 years
	In solvent	-80°C	6 months
		-20°C	1 month



SOLVENT & SOLUBILITY

In Vitro	DMSO : 100 mg/mL (300.96 mM; Need ultrasonic)											
	<table border="1"> <tr> <td rowspan="2">Solvent</td> <td rowspan="2">Concentration</td> <td colspan="3">Mass</td> </tr> <tr> <td>1 mg</td> <td>5 mg</td> <td>10 mg</td> </tr> </table>	Solvent	Concentration	Mass			1 mg	5 mg	10 mg			
Solvent	Concentration			Mass								
		1 mg	5 mg	10 mg								
Preparing Stock Solutions	1 mM	3.0096 mL	15.0480 mL	30.0960 mL								
	5 mM	0.6019 mL	3.0096 mL	6.0192 mL								
	10 mM	0.3010 mL	1.5048 mL	3.0096 mL								
	Please refer to the solubility information to select the appropriate solvent.											
In Vivo	1. Add each solvent one by one: 10% DMSO >> 40% PEG300 >> 5% Tween-80 >> 45% saline Solubility: ≥ 2.5 mg/mL (7.52 mM); Clear solution											

BIOLOGICAL ACTIVITY

Description	FTO-IN-6 is a selective fat mass and obesity associated protein (FTO) inhibitor.
--------------------	--

REFERENCES

[1]. Shishodia S, et al. Structure-Based Design of Selective Fat Mass and Obesity Associated Protein (FTO) Inhibitors. J Med Chem. 2021 Nov 11.

Caution: Product has not been fully validated for medical applications. For research use only.

Tel: 609-228-6898

Fax: 609-228-5909

E-mail: tech@MedChemExpress.com

Address: 1 Deer Park Dr, Suite Q, Monmouth Junction, NJ 08852, USA