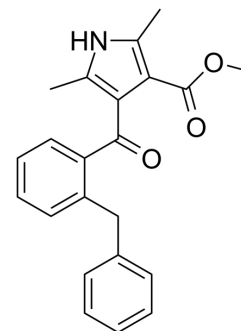


FPL64176

Cat. No.:	HY-103307
CAS No.:	120934-96-5
Molecular Formula:	C ₂₂ H ₂₁ NO ₃
Molecular Weight:	347.41
Target:	Calcium Channel
Pathway:	Membrane Transporter/Ion Channel; Neuronal Signaling
Storage:	4°C, sealed storage, away from moisture and light * In solvent : -80°C, 6 months; -20°C, 1 month (sealed storage, away from moisture and light)



SOLVENT & SOLUBILITY

In Vitro	DMSO : 100 mg/mL (287.84 mM; Need ultrasonic)					
	Preparing Stock Solutions	Solvent	Mass	1 mg	5 mg	10 mg
		Concentration				
		1 mM		2.8784 mL	14.3922 mL	28.7844 mL
		5 mM		0.5757 mL	2.8784 mL	5.7569 mL
	10 mM		0.2878 mL	1.4392 mL	2.8784 mL	
Please refer to the solubility information to select the appropriate solvent.						
In Vivo	<ol style="list-style-type: none"> Add each solvent one by one: 10% DMSO >> 40% PEG300 >> 5% Tween-80 >> 45% saline Solubility: ≥ 2.5 mg/mL (7.20 mM); Clear solution Add each solvent one by one: 10% DMSO >> 90% (20% SBE-β-CD in saline) Solubility: ≥ 2.5 mg/mL (7.20 mM); Clear solution Add each solvent one by one: 10% DMSO >> 90% corn oil Solubility: ≥ 2.5 mg/mL (7.20 mM); Clear solution 					

BIOLOGICAL ACTIVITY

Description	FPL64176, a nondihydropyridine compound, is a potent agonist of L-type Ca ²⁺ channels with an EC ₅₀ value of 16 nM ^{[1][2]} .
--------------------	--

REFERENCES

[1]. Zheng W, Rampe D, Triggle DJ. Pharmacological, radioligand binding, and electrophysiological characteristics of FPL 64176, a novel nondihydropyridine Ca²⁺ channel activator, in cardiac and vascular preparations. Mol Pharmacol. 1991 Nov;40(5):734-41.

[2]. Baxter AJ, Dixon J, Ince F, Manners CN, Teague SJ. Discovery and synthesis of methyl 2,5-dimethyl-4-[2- (phenylmethyl)benzoyl]-1H-pyrrole-3-carboxylate (FPL 64176) and analogues: the first examples of a new class of calcium channel activator. J Med Chem.

Caution: Product has not been fully validated for medical applications. For research use only.

Tel: 609-228-6898

Fax: 609-228-5909

E-mail: tech@MedChemExpress.com

Address: 1 Deer Park Dr, Suite Q, Monmouth Junction, NJ 08852, USA