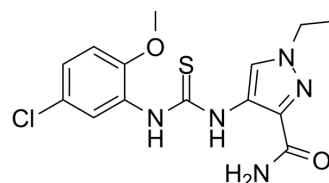


FPH2

Cat. No.:	HY-12281		
CAS No.:	957485-64-2		
Molecular Formula:	C ₁₄ H ₁₆ ClN ₅ O ₂ S		
Molecular Weight:	353.83		
Target:	Others		
Pathway:	Others		
Storage:	Powder	-20°C	3 years
		4°C	2 years
	In solvent	-80°C	2 years
		-20°C	1 year



SOLVENT & SOLUBILITY

In Vitro

DMSO : 100 mg/mL (282.62 mM; Need ultrasonic)

Concentration	Solvent	Mass		
		1 mg	5 mg	10 mg
Preparing Stock Solutions	1 mM	2.8262 mL	14.1311 mL	28.2622 mL
	5 mM	0.5652 mL	2.8262 mL	5.6524 mL
	10 mM	0.2826 mL	1.4131 mL	2.8262 mL

Please refer to the solubility information to select the appropriate solvent.

In Vivo

- Add each solvent one by one: 10% DMSO >> 40% PEG300 >> 5% Tween-80 >> 45% saline
Solubility: ≥ 2.5 mg/mL (7.07 mM); Clear solution
- Add each solvent one by one: 10% DMSO >> 90% corn oil
Solubility: ≥ 2.5 mg/mL (7.07 mM); Clear solution

BIOLOGICAL ACTIVITY

Description

FPH2 induces of functional proliferation of primary human hepatocytes and may lead to the development of new therapeutics for liver diseases.

In Vitro

FPH2 induces functional proliferation of hepatocytes in vitro, and thus may be useful for expanding mature human primary hepatocytes. FPH1 and FPH2 can increase in hepatocyte nuclei count and/or elevate the number of nuclei undergoing mitosis during primary screening, and these effects on hepatocytes are concentration dependent. Cells treated with FPH1 and FPH2 also maintain their liver-specific functions. Over 7 days, FPH2 induces hepatocyte doublings at a rate that is consistent with reported liver regeneration kinetics in vivo^[1].

MCE has not independently confirmed the accuracy of these methods. They are for reference only.

REFERENCES

[1]. Shan J, et al. Identification of small molecules for human hepatocyte expansion and iPS differentiation. Nat Chem Biol. 2013 Aug;9(8):514-20.

Caution: Product has not been fully validated for medical applications. For research use only.

Tel: 609-228-6898

Fax: 609-228-5909

E-mail: tech@MedChemExpress.com

Address: 1 Deer Park Dr, Suite Q, Monmouth Junction, NJ 08852, USA