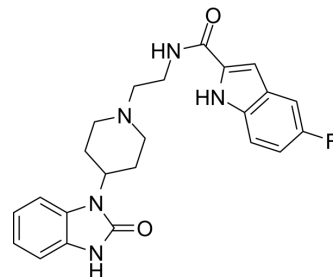


FIPI

Cat. No.:	HY-12807		
CAS No.:	939055-18-2		
Molecular Formula:	C ₂₃ H ₂₄ FN ₅ O ₂		
Molecular Weight:	421.47		
Target:	Phospholipase; Autophagy		
Pathway:	Metabolic Enzyme/Protease; Autophagy		
Storage:	Powder	-20°C	3 years
		4°C	2 years
	In solvent	-80°C	2 years
		-20°C	1 year



SOLVENT & SOLUBILITY

In Vitro

DMSO : 14.67 mg/mL (34.81 mM; Need ultrasonic and warming)

Concentration	Solvent	Mass		
		1 mg	5 mg	10 mg
Preparing Stock Solutions	1 mM	2.3726 mL	11.8632 mL	23.7265 mL
	5 mM	0.4745 mL	2.3726 mL	4.7453 mL
	10 mM	0.2373 mL	1.1863 mL	2.3726 mL

Please refer to the solubility information to select the appropriate solvent.

BIOLOGICAL ACTIVITY

Description

FIPI (5-Fluoro-2-indolyl des-chlorohalopemide), a derivative of Halopemide (HY-119093), is a phospholipase D (PLD) inhibitor with IC₅₀s of approximately 25 nM and 20 nM for PLD1 and PLD2, respectively. FIPI inhibits PLD regulation of F-actin cytoskeleton reorganization, cell spreading, and chemotaxis. FIPI has the potential for autoimmunity and cancer metastasis research^{[1][2][3]}.

IC₅₀ & Target

IC₅₀: 25 nM (PLD1), 20 nM (PLD2)

CUSTOMER VALIDATION

- Anal Chem. 2018 Jun 5;90(11):6742-6748.
- J Cell Sci. 2018 Mar 16;131(6). pii: jcs207217.
- Patent. US20230050888A1.

-
- Nanoscale Res Lett. 2019 Apr 18;14(1):138.

See more customer validations on www.MedChemExpress.com

REFERENCES

- [1]. Claudia Dall'Armi, et al. The phospholipase D1 pathway modulates macroautophagy. Nat Commun. 2010;1:142.
- [2]. Monovich L, et al. Optimization of halopemide for phospholipase D2 inhibition. Bioorg Med Chem Lett. 2007 Apr 15;17(8):2310-1.
- [3]. Su W, et al. 5-Fluoro-2-indolyl des-chlorohalopemide (FIPI), a phospholipase D pharmacological inhibitor that alters cell spreading and inhibits chemotaxis. Mol Pharmacol. 2009 Mar;75(3):437-46.
-

Caution: Product has not been fully validated for medical applications. For research use only.

Tel: 609-228-6898

Fax: 609-228-5909

E-mail: tech@MedChemExpress.com

Address: 1 Deer Park Dr, Suite Q, Monmouth Junction, NJ 08852, USA