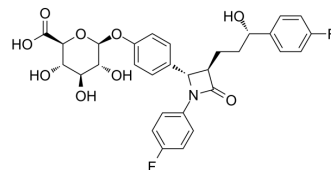


Ezetimibe phenoxy glucuronide

Cat. No.:	HY-135391		
CAS No.:	190448-57-8		
Molecular Formula:	C ₃₀ H ₂₉ F ₂ NO ₉		
Molecular Weight:	585.55		
Target:	Drug Metabolite		
Pathway:	Metabolic Enzyme/Protease		
Storage:	Powder	-20°C	3 years
		4°C	2 years
	In solvent	-80°C	6 months
		-20°C	1 month



SOLVENT & SOLUBILITY

In Vitro

DMSO : 100 mg/mL (170.78 mM; Need ultrasonic)

Concentration	Mass		
	1 mg	5 mg	10 mg
1 mM	1.7078 mL	8.5390 mL	17.0780 mL
5 mM	0.3416 mL	1.7078 mL	3.4156 mL
10 mM	0.1708 mL	0.8539 mL	1.7078 mL

Please refer to the solubility information to select the appropriate solvent.

BIOLOGICAL ACTIVITY

Description

Ezetimibe phenoxy glucuronide (Ezetimibe glucuronide) is the active metabolite of Ezetimibe. Antihyperlipoproteinemic activity^[1]. Ezetimibe is a potent cholesterol absorption inhibitor^[2].

In Vivo

After oral administration, Ezetimibe is absorbed in the small intestine and more than 80% of Ezetimibe metabolized to Ezetimibe Glucuronide^[1].

MCE has not independently confirmed the accuracy of these methods. They are for reference only.

REFERENCES

[1]. Stolk MF, et al. Severe hepatic side effects of ezetimibe. Clin Gastroenterol Hepatol. 2006 Jul;4(7):908-11.

[2]. Lee DH, et al. Ezetimibe, an NPC1L1 inhibitor, is a potent Nrf2 activator that protects mice from diet-induced nonalcoholic steatohepatitis. Free Radic Biol Med. 2016 Sep 12;99:520-532.

Caution: Product has not been fully validated for medical applications. For research use only.

Tel: 609-228-6898

Fax: 609-228-5909

E-mail: tech@MedChemExpress.com

Address: 1 Deer Park Dr, Suite Q, Monmouth Junction, NJ 08852, USA