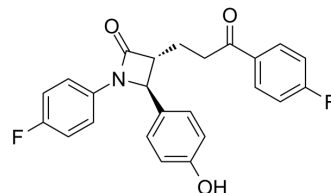


Ezetimibe ketone

Cat. No.:	HY-133114		
CAS No.:	191330-56-0		
Molecular Formula:	C ₂₄ H ₁₉ F ₂ NO ₃		
Molecular Weight:	407.41		
Target:	Keap1-Nrf2; Autophagy		
Pathway:	NF-κB; Autophagy		
Storage:	Powder	-20°C	3 years
		4°C	2 years
	In solvent	-80°C	6 months
		-20°C	1 month



SOLVENT & SOLUBILITY

In Vitro	DMSO : 100 mg/mL (245.45 mM; Need ultrasonic)				
		Solvent Concentration	Mass 1 mg	5 mg	10 mg
	Preparing Stock Solutions	1 mM	2.4545 mL	12.2726 mL	24.5453 mL
		5 mM	0.4909 mL	2.4545 mL	4.9091 mL
10 mM		0.2455 mL	1.2273 mL	2.4545 mL	
Please refer to the solubility information to select the appropriate solvent.					
In Vivo	<ol style="list-style-type: none"> Add each solvent one by one: 10% DMSO >> 40% PEG300 >> 5% Tween-80 >> 45% saline Solubility: ≥ 1.25 mg/mL (3.07 mM); Clear solution Add each solvent one by one: 10% DMSO >> 90% (20% SBE-β-CD in saline) Solubility: 1.25 mg/mL (3.07 mM); Suspended solution; Need ultrasonic Add each solvent one by one: 10% DMSO >> 90% corn oil Solubility: ≥ 1.25 mg/mL (3.07 mM); Clear solution 				

BIOLOGICAL ACTIVITY

Description	Ezetimibe ketone (EZM-K) is a phase-I metabolite of Ezetimibe. Ezetimibe is a Niemann-Pick C1-like1 (NPC1L1) inhibitor, and is a potent Nrf2 activator. Ezetimibe is a potent cholesterol absorption inhibitor ^{[1][2][3]} .
IC₅₀ & Target	NPC1L1, Nrf2 ^[1]

REFERENCES

-
- [1]. Yijun Zhu, et al. Efficient and scalable process for the synthesis of antihypercholesterolemic drug ezetimibe. *Synthetic Communications*. 2016, 46:20, 1687-1693.
- [2]. Lee DH, et al. Ezetimibe, an NPC1L1 inhibitor, is a potent Nrf2 activator that protects mice from diet-induced nonalcoholic steatohepatitis. *Free Radic Biol Med*. 2016 Sep 12;99:520-532.
- [3]. Chang E, et al. Ezetimibe improves hepatic steatosis in relation to autophagy in obese and diabetic rats. *World J Gastroenterol*. 2015 Jul 7;21(25):7754-63.
-

Caution: Product has not been fully validated for medical applications. For research use only.

Tel: 609-228-6898

Fax: 609-228-5909

E-mail: tech@MedChemExpress.com

Address: 1 Deer Park Dr, Suite Q, Monmouth Junction, NJ 08852, USA