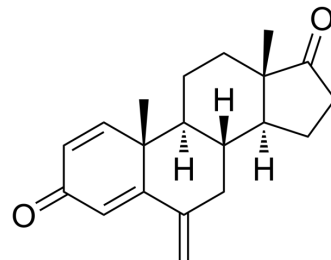


Exemestane (Standard)

Cat. No.:	HY-13632R
CAS No.:	107868-30-4
Molecular Formula:	C ₂₀ H ₂₄ O ₂
Molecular Weight:	296.4
Target:	Cytochrome P450
Pathway:	Metabolic Enzyme/Protease
Storage:	Please store the product under the recommended conditions in the Certificate of Analysis.



SOLVENT & SOLUBILITY

In Vitro

DMSO : ≥ 54 mg/mL (182.19 mM)

* "≥" means soluble, but saturation unknown.

Preparing Stock Solutions	Solvent Concentration	Mass		
		1 mg	5 mg	10 mg
	1 mM	3.3738 mL	16.8691 mL	33.7382 mL
	5 mM	0.6748 mL	3.3738 mL	6.7476 mL
	10 mM	0.3374 mL	1.6869 mL	3.3738 mL

Please refer to the solubility information to select the appropriate solvent.

BIOLOGICAL ACTIVITY

Description

Exemestane (Standard) is the analytical standard of Exemestane. This product is intended for research and analytical applications. Exemestane (FCE 24304) is a selective, irreversible and orally active steroidal aromatase inhibitor with IC₅₀s of 30 nM and 40 nM for human placental and rat ovarian aromatase, respectively. Exemestane can be used for hormone-dependent breast cancer research^{[1][2]}.

IC₅₀ & Target

Aromatase

CUSTOMER VALIDATION

- J Pharm Biomed Anal. 2023 Jul 14, 115583.
- J Pharmaceut Biomed. 2020, 113870.

See more customer validations on www.MedChemExpress.com

Caution: Product has not been fully validated for medical applications. For research use only.

Tel: 609-228-6898

Fax: 609-228-5909

E-mail: tech@MedChemExpress.com

Address: 1 Deer Park Dr, Suite Q, Monmouth Junction, NJ 08852, USA