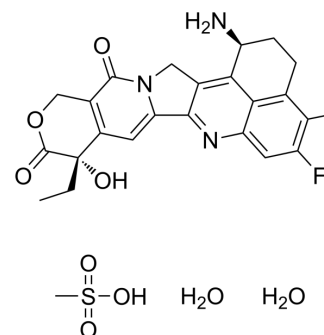


## Exatecan mesylate dihydrate

<b>Cat. No.:</b>	HY-13631P
<b>CAS No.:</b>	197720-53-9
<b>Molecular Formula:</b>	C <sub>24</sub> H <sub>22</sub> FN <sub>3</sub> O <sub>4</sub> S·CH <sub>4</sub> O <sub>3</sub> S <sub>2</sub> ·2H <sub>2</sub> O
<b>Molecular Weight:</b>	567.58
<b>Target:</b>	Topoisomerase; ADC Cytotoxin
<b>Pathway:</b>	Cell Cycle/DNA Damage; Antibody-drug Conjugate/ADC Related
<b>Storage:</b>	Please store the product under the recommended conditions in the Certificate of Analysis.



### BIOLOGICAL ACTIVITY

<b>Description</b>	Exatecan (DX-8951) mesylate dihydrate is a DNA topoisomerase I inhibitor, with an IC <sub>50</sub> of 2.2 μM (0.975 μg/mL), and can be used in cancer research <sup>[1][2][3]</sup> .
<b>IC<sub>50</sub> &amp; Target</b>	Topoisomerase I 2.2 μM (IC <sub>50</sub> )

### CUSTOMER VALIDATION

- Mol Pharm. 2022 Dec 2.
- Pharmaceuticals. 2021, 14(3), 247.
- Patent. US20220162323A1.
- Patent. US20210009719A1.

See more customer validations on [www.MedChemExpress.com](http://www.MedChemExpress.com)

### REFERENCES

[1]. Mitsui I, et al. A new water-soluble camptothecin derivative, DX-8951f, exhibits potent antitumor activity against human tumors in vitro and in vivo. Jpn J Cancer Res. 1995 Aug;86(8):776-82.

[2]. Sun FX, et al. Efficacy of camptothecin analog DX-8951f (Exatecan Mesylate) on human pancreatic cancer in an orthotopic metastatic model. Cancer Res. 2003 Jan 1;63(1):80-5.

[3]. Joto N, et al. DX-8951f, a water-soluble camptothecin analog, exhibits potent antitumor activity against a human lung cancer cell line and its SN-38-resistant variant. Int J Cancer. 1997 Aug 7;72(4):680-6.

---

**Caution: Product has not been fully validated for medical applications. For research use only.**

Tel: 609-228-6898

Fax: 609-228-5909

E-mail: [tech@MedChemExpress.com](mailto:tech@MedChemExpress.com)

Address: 1 Deer Park Dr, Suite Q, Monmouth Junction, NJ 08852, USA