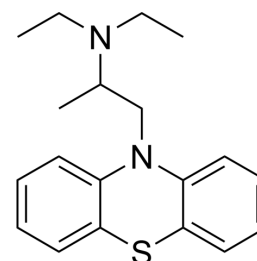


Ethopropazine hydrochloride

Cat. No.:	HY-107922
CAS No.:	1094-08-2
Molecular Formula:	C ₁₉ H ₂₅ ClN ₂ S
Molecular Weight:	348.93
Target:	Cholinesterase (ChE)
Pathway:	Neuronal Signaling
Storage:	4°C, sealed storage, away from moisture and light * In solvent : -80°C, 6 months; -20°C, 1 month (sealed storage, away from moisture and light)



H-Cl

SOLVENT & SOLUBILITY

In Vitro	DMSO : 25 mg/mL (71.65 mM); ultrasonic and warming and heat to 60°C				
		Solvent	Mass		
		Concentration	1 mg	5 mg	10 mg
	Preparing Stock Solutions	1 mM	2.8659 mL	14.3295 mL	28.6590 mL
		5 mM	0.5732 mL	2.8659 mL	5.7318 mL
		10 mM	0.2866 mL	1.4330 mL	2.8659 mL
Please refer to the solubility information to select the appropriate solvent.					
In Vivo	1. Add each solvent one by one: 10% DMSO >> 40% PEG300 >> 5% Tween-80 >> 45% saline Solubility: ≥ 2.5 mg/mL (7.16 mM); Clear solution				
	2. Add each solvent one by one: 10% DMSO >> 90% (20% SBE-β-CD in saline) Solubility: ≥ 2.5 mg/mL (7.16 mM); Clear solution				
	3. Add each solvent one by one: 10% DMSO >> 90% corn oil Solubility: ≥ 2.5 mg/mL (7.16 mM); Clear solution				

BIOLOGICAL ACTIVITY

Description	Ethopropazine (Isothazine) hydrochloride is a potent, selective BChE inhibitor and a poor AChE inhibitor. Ethopropazine hydrochloride is a phenothiazine compound with anticholinergic properties. Ethopropazine hydrochloride can be used for the research of Parkinson's disease ^{[1][2]} .	
IC₅₀ & Target	AChE	BChE

REFERENCES

[1]. Prabhu S, et al. Enhancement of dissolution of ethopropazine using solid dispersions prepared with phospholipid and/or polyethylene glycol. Drug Dev Ind Pharm. 2001 May;27(5):413-8.

[2]. Reiner E, et al. Activity of cholinesterases in human whole blood measured with acetylthiocholine as substrate and ethopropazine as selective inhibitor of plasma butyrylcholinesterase. Arh Hig Rada Toksikol. 2004 Apr;55(1):1-4.

Caution: Product has not been fully validated for medical applications. For research use only.

Tel: 609-228-6898

Fax: 609-228-5909

E-mail: tech@MedChemExpress.com

Address: 1 Deer Park Dr, Suite Q, Monmouth Junction, NJ 08852, USA