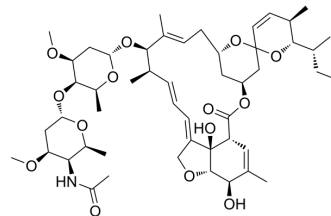


## Eprinomectin

<b>Cat. No.:</b>	HY-12643		
<b>CAS No.:</b>	123997-26-2		
<b>Molecular Formula:</b>	C <sub>50</sub> H <sub>75</sub> NO <sub>14</sub>		
<b>Molecular Weight:</b>	914.13		
<b>Target:</b>	Parasite; Bacterial		
<b>Pathway:</b>	Anti-infection		
<b>Storage:</b>	Powder	-20°C	3 years
		4°C	2 years
	In solvent	-80°C	6 months
		-20°C	1 month



### SOLVENT & SOLUBILITY

#### In Vitro

DMSO : 125 mg/mL (136.74 mM; Need ultrasonic)

Concentration	Mass		
	1 mg	5 mg	10 mg
1 mM	1.0939 mL	5.4697 mL	10.9394 mL
5 mM	0.2188 mL	1.0939 mL	2.1879 mL
10 mM	0.1094 mL	0.5470 mL	1.0939 mL

Please refer to the solubility information to select the appropriate solvent.

#### In Vivo

- Add each solvent one by one: 10% DMSO >> 40% PEG300 >> 5% Tween-80 >> 45% saline  
Solubility: ≥ 2.5 mg/mL (2.73 mM); Clear solution
- Add each solvent one by one: 10% DMSO >> 90% (20% SBE-β-CD in saline)  
Solubility: 2.5 mg/mL (2.73 mM); Suspended solution; Need ultrasonic
- Add each solvent one by one: 10% DMSO >> 90% corn oil  
Solubility: ≥ 2.5 mg/mL (2.73 mM); Clear solution

### BIOLOGICAL ACTIVITY

#### Description

Eprinomectin(MK-397) is an avermectin selected for development as a topical endectocide; has anthelmintic, insecticidal and miticidal activity.

#### IC<sub>50</sub> & Target

Mite

### REFERENCES

- 
- [1]. Baoliang P, et al. Pharmacokinetics of eprinomectin in plasma and milk following subcutaneous administration to lactating dairy cattle. *Vet Res Commun*. 2006 Apr;30(3):263-70.
- [2]. Visser M, et al. The treatment of bovine sarcoptic mange (*Sarcoptes scabiei* var. *bovis*) using eprinomectin extended-release injection. *Vet Parasitol*. 2013 Mar 1;192(4):359-64.
- [3]. Shoop WL, et al. Eprinomectin: a novel avermectin for use as a topical endectocide for cattle. *Int J Parasitol*. 1996 Nov;26(11):1237-42.
- 

**Caution: Product has not been fully validated for medical applications. For research use only.**

Tel: 609-228-6898

Fax: 609-228-5909

E-mail: [tech@MedChemExpress.com](mailto:tech@MedChemExpress.com)

Address: 1 Deer Park Dr, Suite Q, Monmouth Junction, NJ 08852, USA