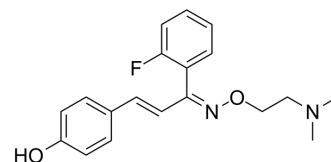


Eplivanserin (mixture)

Cat. No.:	HY-10792A
CAS No.:	130581-13-4
Molecular Formula:	C ₁₉ H ₂₁ FN ₂ O ₂
Molecular Weight:	328.38
Target:	Serotonin Transporter; 5-HT Receptor
Pathway:	Neuronal Signaling; GPCR/G Protein
Storage:	Powder -20°C 3 years 4°C 2 years



* The compound is unstable in solutions, freshly prepared is recommended.

SOLVENT & SOLUBILITY

In Vitro	DMSO : 125 mg/mL (380.66 mM; Need ultrasonic)				
	Preparing Stock Solutions	Solvent	1 mg	5 mg	10 mg
		Concentration			
		1 mM	3.0453 mL	15.2263 mL	30.4525 mL
		5 mM	0.6091 mL	3.0453 mL	6.0905 mL
	10 mM	0.3045 mL	1.5226 mL	3.0453 mL	
Please refer to the solubility information to select the appropriate solvent.					
In Vivo	1. Add each solvent one by one: 10% DMSO >> 40% PEG300 >> 5% Tween-80 >> 45% saline Solubility: ≥ 2.08 mg/mL (6.33 mM); Clear solution				
	2. Add each solvent one by one: 10% DMSO >> 90% (20% SBE-β-CD in saline) Solubility: ≥ 2.08 mg/mL (6.33 mM); Clear solution				
	3. Add each solvent one by one: 10% DMSO >> 90% corn oil Solubility: ≥ 2.08 mg/mL (6.33 mM); Clear solution				

BIOLOGICAL ACTIVITY

Description	Eplivanserin mixture (SR-46349 mixture) is a selective serotonin reuptake inhibitor and a 5-HT _{2A} receptor antagonist, extracted from patent WO 2005/002578 A1 ^[1] .
IC₅₀ & Target	5-HT _{2A} Receptor

REFERENCES

Caution: Product has not been fully validated for medical applications. For research use only.

Tel: 609-228-6898

Fax: 609-228-5909

E-mail: tech@MedChemExpress.com

Address: 1 Deer Park Dr, Suite Q, Monmouth Junction, NJ 08852, USA