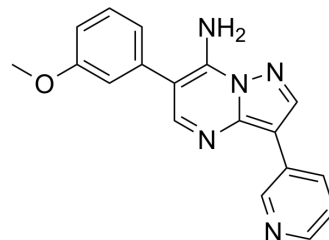


## Eph inhibitor 2

Cat. No.:	HY-131005
CAS No.:	861249-59-4
Molecular Formula:	C <sub>18</sub> H <sub>15</sub> N <sub>5</sub> O
Molecular Weight:	317.34
Target:	Ephrin Receptor
Pathway:	Protein Tyrosine Kinase/RTK
Storage:	Please store the product under the recommended conditions in the Certificate of Analysis.



### BIOLOGICAL ACTIVITY

#### Description

Eph inhibitor 2 (Example 35) is a Eph family tyrosine kinase inhibitor.

### REFERENCES

[1]. Rajeev Sivasankaran, et al. Use of pyrazolo[1,5a]pyrimidin-7-yl amine derivatives in the treatment of neurological disorders. WO2007103432A2.

**Caution: Product has not been fully validated for medical applications. For research use only.**

Tel: 609-228-6898

Fax: 609-228-5909

E-mail: tech@MedChemExpress.com

Address: 1 Deer Park Dr, Suite Q, Monmouth Junction, NJ 08852, USA