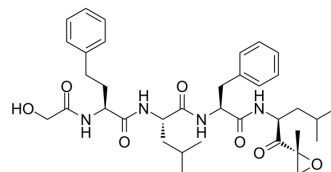


## Enzyme-IN-1

Cat. No.:	HY-150226		
CAS No.:	868540-02-7		
Molecular Formula:	C <sub>36</sub> H <sub>50</sub> N <sub>4</sub> O <sub>7</sub>		
Molecular Weight:	650.8		
Target:	Proteasome		
Pathway:	Metabolic Enzyme/Protease		
Storage:	Powder	-20°C	3 years
		4°C	2 years
	In solvent	-80°C	6 months
		-20°C	1 month



### BIOLOGICAL ACTIVITY

#### Description

Enzyme-IN-1 (compound 1) is a peptide-based inhibitor of N-terminal nucleophile (Ntn) hydrolases. Specifically, Enzyme-IN-1 inhibits the chymotrypsin-like activity (CT-L) of the 20S proteasome. Enzyme-IN-1 may have potential antiinflammatory properties<sup>[1]</sup>.

### REFERENCES

[1]. Smyth Mark, et al. Preparation of peptides for the inhibition of enzymes. United States, US20050245435 A1. 2005-11-03.

**Caution: Product has not been fully validated for medical applications. For research use only.**

Tel: 609-228-6898

Fax: 609-228-5909

E-mail: tech@MedChemExpress.com

Address: 1 Deer Park Dr, Suite Q, Monmouth Junction, NJ 08852, USA