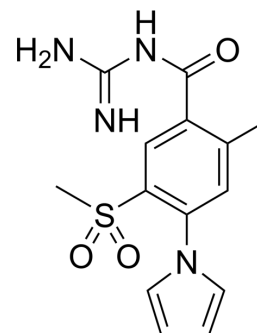


## Eniporide

|                           |   |
|---------------------------|---|
| <b>Cat. No.:</b>          | HY-106150   |
| <b>CAS No.:</b>           | 176644-21-6   |
| <b>Molecular Formula:</b> | C <sub>14</sub> H <sub>16</sub> N <sub>4</sub> O <sub>3</sub> S                           |
| <b>Molecular Weight:</b>  | 320.37  |
| <b>Target:</b>            | Biochemical Assay Reagents  |
| <b>Pathway:</b>           | Others  |
| <b>Storage:</b>           | Please store the product under the recommended conditions in the Certificate of Analysis. |



### BIOLOGICAL ACTIVITY

|                    |  |
|--------------------|--|
| <b>Description</b> | Eniporide (EMD 96785) is a Na(+)/H(+) exchange (NHE) inhibitor. Eniporide specifically inhibits the NHE-1 isoform. Eniporide improves cardiac performance inhibition associated with myocardial ischemia/reperfusion in animals, and limits infarct size in experimental models. Eniporide regulates cardiac performance and high-energy phosphate content in clinically relevant pig models of CPB and cardiac arrest <sup>[1][2]</sup> . |
| <b>In Vitro</b>    | ENIPORIDE is a potent Na <sup>+</sup> /H <sup>+</sup> exchange inhibitor.<br>MCE has not independently confirmed the accuracy of these methods. They are for reference only.   |
| <b>In Vivo</b>     | Eniporide (3 mg/kg; iv; systemic infusion before cardioplegia) improves cardiac performance and high energy phosphate content in healthy pig hearts subjected to ischemia/reperfusion induced by crystalloid cardioplegic arrest <sup>[1]</sup> .<br>MCE has not independently confirmed the accuracy of these methods. They are for reference only.   |
| Animal Model:      | Clinically relevant pig models of cardiopulmonary bypass (CPB) and cardioplegia <sup>[1]</sup>   |
| Dosage:            | 3 mg/kg  |
| Administration:    | IV; systemic infusion before cardioplegia with added 2 μM Eniporide or not   |
| Result:            | Had no effect on standard hemodynamics including vascular pressures and cardiac index nor for cardiac performance factors.<br>Reduced myocardial edema and improves heart function.  |

### CUSTOMER VALIDATION

- Sci Rep. 2020 Apr 2;10(1):5800.

See more customer validations on [www.MedChemExpress.com](http://www.MedChemExpress.com)

### REFERENCES

---

[1]. Zeymer U, et al. The Na(+)/H(+) exchange inhibitor eniporide as an adjunct to early reperfusion therapy for acute myocardial infarction. Results of the evaluation of the safety and cardioprotective effects of eniporide in acute myocardial infarction (ESCAMI) trial. J Am Coll Cardiol. 2001 Nov 15;38(6):1644-50.

[2]. Klass O, et al. Effect of the Na+/H+ exchange inhibitor eniporide on cardiac performance and myocardial high energy phosphates in pigs subjected to cardioplegic arrest. Ann Thorac Surg. 2004 Feb;77(2):658-63.

---

**Caution: Product has not been fully validated for medical applications. For research use only.**

Tel: 609-228-6898

Fax: 609-228-5909

E-mail: [tech@MedChemExpress.com](mailto:tech@MedChemExpress.com)

Address: 1 Deer Park Dr, Suite Q, Monmouth Junction, NJ 08852, USA