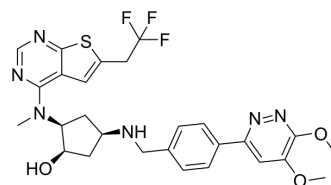


Emilumenib

Cat. No.:	HY-148676
CAS No.:	2440018-29-9
Molecular Formula:	C ₂₇ H ₂₉ F ₃ N ₆ O ₃ S
Molecular Weight:	574.62
Target:	Epigenetic Reader Domain
Pathway:	Epigenetics
Storage:	Please store the product under the recommended conditions in the Certificate of Analysis.



BIOLOGICAL ACTIVITY

Description

Emilumenib (Menin-MLL inhibitor 26) is a Menin-MLL inhibitor. Emilumenib also is an active reference. Emilumenib can inhibit cell growth. Emilumenib can be used for the research of leukemia^[1].

REFERENCES

[1]. Cycloalkane-1, 3-diamine derivatives, et al. Cycloalkane-1, 3-diamine derivatives. Patent. CN113164481A.

Caution: Product has not been fully validated for medical applications. For research use only.

Tel: 609-228-6898

Fax: 609-228-5909

E-mail: tech@MedChemExpress.com

Address: 1 Deer Park Dr, Suite Q, Monmouth Junction, NJ 08852, USA