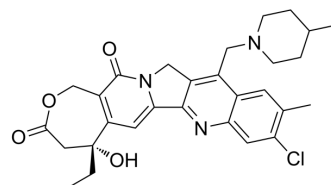


## Elomotecan

Cat. No.:	HY-13622A
CAS No.:	220998-10-7
Molecular Formula:	C <sub>29</sub> H <sub>32</sub> ClN <sub>3</sub> O <sub>4</sub>
Molecular Weight:	522.04
Target:	Topoisomerase
Pathway:	Cell Cycle/DNA Damage
Storage:	Please store the product under the recommended conditions in the Certificate of Analysis.



### BIOLOGICAL ACTIVITY

<b>Description</b>	Elomotecan (BN 80927 free base) is a potent inhibitor of topoisomerases I and II. Elomotecan is a camptothecin analog belonging to the homocamptothecin family (hCPT). Elomotecan reduces the proliferation of different tumor cells with higher potency than other anticancer agents of reference targeting topoisomerases I and II <sup>[1]</sup> .	
<b>IC<sub>50</sub> &amp; Target</b>	Topoisomerase I	Topoisomerase II

### REFERENCES

[1]. Trocóniz IF, et al. Population pharmacokinetic/pharmacodynamic modeling of drug-induced adverse effects of a novel homocamptothecin analog, elomotecan (BN80927), in a Phase I dose finding study in patients with advanced solid tumors. *Cancer Chemother Pharmacol.* 2012;70(2):239-250.

**Caution: Product has not been fully validated for medical applications. For research use only.**

Tel: 609-228-6898

Fax: 609-228-5909

E-mail: tech@MedChemExpress.com

Address: 1 Deer Park Dr, Suite Q, Monmouth Junction, NJ 08852, USA