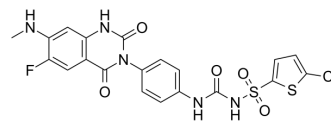


Elinogrel

Cat. No.:	HY-11021		
CAS No.:	936500-94-6		
Molecular Formula:	C ₂₀ H ₁₅ ClFN ₅ O ₅ S ₂		
Molecular Weight:	523.95		
Target:	P2Y Receptor		
Pathway:	GPCR/G Protein		
Storage:	Powder	-20°C	3 years
		4°C	2 years
	In solvent	-80°C	6 months
		-20°C	1 month



SOLVENT & SOLUBILITY

In Vitro	DMSO : 62.5 mg/mL (119.29 mM; Need ultrasonic)				
		Solvent Concentration	Mass 1 mg	5 mg	10 mg
	Preparing Stock Solutions	1 mM	1.9086 mL	9.5429 mL	19.0858 mL
		5 mM	0.3817 mL	1.9086 mL	3.8172 mL
10 mM		0.1909 mL	0.9543 mL	1.9086 mL	
Please refer to the solubility information to select the appropriate solvent.					
In Vivo	1. Add each solvent one by one: 10% DMSO >> 40% PEG300 >> 5% Tween-80 >> 45% saline Solubility: ≥ 2.08 mg/mL (3.97 mM); Clear solution				
	2. Add each solvent one by one: 10% DMSO >> 90% corn oil Solubility: ≥ 2.08 mg/mL (3.97 mM); Clear solution				

BIOLOGICAL ACTIVITY

Description	Elinogrel (PRT060128) is a potent, direct acting, competitive, and reversible platelet P2Y ₁₂ antagonist (IC ₅₀ =20 nM). It is orally and intravenously available and has potent antiplatelet effects ^[1] .
IC ₅₀ & Target	IC ₅₀ : 20 nM (P2Y ₁₂) ^[2]

REFERENCES

[1]. Angiolillo DJ, et al. Pharmacokinetic and pharmacodynamic effects of elinogrel: results of the platelet function substudy from the intravenous and oral administration of elinogrel to evaluate tolerability and efficacy in nonurgent percutaneous coronary intervention patients (INNOVATE-PCI) trial. *Circ Cardiovasc Interv.* 2012 Jun;5(3):347-56.

Caution: Product has not been fully validated for medical applications. For research use only.

Tel: 609-228-6898

Fax: 609-228-5909

E-mail: tech@MedChemExpress.com

Address: 1 Deer Park Dr, Suite Q, Monmouth Junction, NJ 08852, USA