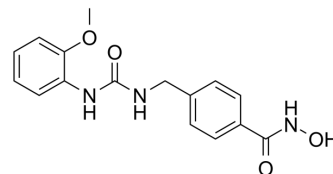


Elevenostat

| | | | |
|--------------------|---|-------|----------|
| Cat. No.: | HY-145757 | | |
| CAS No.: | 1454902-97-6 | | |
| Molecular Formula: | C ₁₆ H ₁₇ N ₃ O ₄ | | |
| Molecular Weight: | 315.32 | | |
| Target: | HDAC | | |
| Pathway: | Cell Cycle/DNA Damage; Epigenetics | | |
| Storage: | Powder | -20°C | 3 years |
| | | 4°C | 2 years |
| | In solvent | -80°C | 6 months |
| | | -20°C | 1 month |



SOLVENT & SOLUBILITY

| | | | | |
|----------|---|--------------------------|-----------|------------|
| In Vitro | DMSO : 250 mg/mL (792.85 mM; Need ultrasonic) | | | |
| | | Solvent Concentration | Mass | |
| | | | 1 mg | 5 mg |
| | Preparing Stock Solutions | 1 mM | 3.1714 mL | 15.8569 mL |
| | | 5 mM | 3.1714 mL | 6.3428 mL |
| | | 10 mM | 0.3171 mL | 1.5857 mL |
| | Please refer to the solubility information to select the appropriate solvent. | | | |
| In Vivo | 1. Add each solvent one by one: 10% DMSO >> 40% PEG300 >> 5% Tween-80 >> 45% saline Solubility: ≥ 2.08 mg/mL (6.60 mM); Clear solution | | | |
| | 2. Add each solvent one by one: 10% DMSO >> 90% (20% SBE-β-CD in saline) Solubility: 2.08 mg/mL (6.60 mM); Suspended solution; Need ultrasonic | | | |
| | 3. Add each solvent one by one: 10% DMSO >> 90% corn oil Solubility: ≥ 2.08 mg/mL (6.60 mM); Clear solution | | | |

BIOLOGICAL ACTIVITY

| | |
|---------------------------|---|
| Description | Elevenostat (JB3-22) is a selective HDAC11 inhibitor (IC ₅₀ =0.235 μM). Anti-multiple myeloma (MM) activity ^[1] . |
| IC ₅₀ & Target | HDAC11 0.235 μM (IC ₅₀) |

REFERENCES

[1]. Mostofa A, et al. Plasma cell dependence on histone/protein deacetylase 11 reveals a therapeutic target in multiple myeloma. JCI Insight. 2021;6(24):e151713. Published 2021 Dec 22.

[2]. Huang J, et al. Histone/protein deacetylase 11 targeting promotes Foxp3+ Treg function. Sci Rep. 2017;7(1):8626. Published 2017 Aug 17.

Caution: Product has not been fully validated for medical applications. For research use only.

Tel: 609-228-6898

Fax: 609-228-5909

E-mail: tech@MedChemExpress.com

Address: 1 Deer Park Dr, Suite Q, Monmouth Junction, NJ 08852, USA