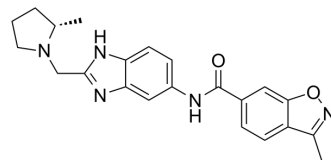


Eleven-Nineteen-Leukemia Protein IN-2

Cat. No.:	HY-152470
CAS No.:	2894121-78-7
Molecular Formula:	C ₂₂ H ₂₃ N ₅ O ₂
Molecular Weight:	389.45
Target:	Epigenetic Reader Domain
Pathway:	Epigenetics
Storage:	Please store the product under the recommended conditions in the Certificate of Analysis.



BIOLOGICAL ACTIVITY

Description	Eleven-Nineteen-Leukemia Protein IN-2 (compound 23) is an Eleven-Nineteen-Leukemia Protein (ENL) inhibitor with an IC ₅₀ value of 10.7 nM. Eleven-Nineteen-Leukemia Protein IN-2 can be used for the research of leukemia ^[1] .
In Vitro	Eleven-Nineteen-Leukemia Protein IN-2 (0-1000 nM) shows ENL inhibitory activity with an IC ₅₀ value of 10.7 nM ^[1] . Eleven-Nineteen-Leukemia Protein IN-2 (0-1000 μM; 72 hours) inhibits activity of MOLM-13 cells with an IC ₅₀ value of 37.9 μM ^[1] . MCE has not independently confirmed the accuracy of these methods. They are for reference only.

REFERENCES

[1]. Guo S, et al. Design, synthesis of novel benzimidazole derivatives as ENL inhibitors suppressing leukemia cells viability via downregulating the expression of MYC. Eur J Med Chem. 2023 Feb 15;248:115093.

Caution: Product has not been fully validated for medical applications. For research use only.

Tel: 609-228-6898

Fax: 609-228-5909

E-mail: tech@MedChemExpress.com

Address: 1 Deer Park Dr, Suite Q, Monmouth Junction, NJ 08852, USA