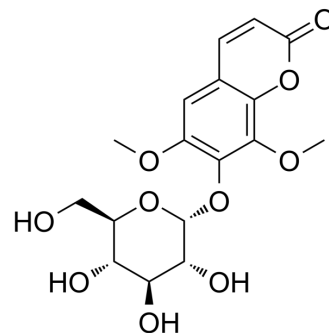


Eleutheroside B1

Cat. No.:	HY-135646
CAS No.:	16845-16-2
Molecular Formula:	C ₁₇ H ₂₀ O ₁₀
Molecular Weight:	384.33
Target:	Influenza Virus
Pathway:	Anti-infection
Storage:	4°C, sealed storage, away from moisture and light * In solvent : -80°C, 6 months; -20°C, 1 month (sealed storage, away from moisture and light)



BIOLOGICAL ACTIVITY

Description	Eleutheroside B1, a coumarin compound, has a wide spectrum of anti-human influenza virus efficacy, with an IC ₅₀ value of 64-125 µg/ml. Eleutheroside B1 mediates its anti-influenza activity through POLR2A and N-glycosylation. Eleutheroside B1 inhibits the mRNA expression of several chemokine genes and the influenza nucleoprotein (NP) gene, and exhibits low cytotoxicity. Antiviral and anti-inflammatory activities ^[1] .								
In Vitro	<p>Eleutheroside B1 (100 µg/ml; 24 hours) influences mRNA expression of host genes and virus genes in A549 cells^[1]. MCE has not independently confirmed the accuracy of these methods. They are for reference only.</p> <p>RT-PCR^[1]</p> <table border="1"> <tr> <td>Cell Line:</td> <td>Virus-infected A549 cells</td> </tr> <tr> <td>Concentration:</td> <td>100 µg/ml</td> </tr> <tr> <td>Incubation Time:</td> <td>24 hours</td> </tr> <tr> <td>Result:</td> <td>The expression of host genes (MAN2A2, POLR2A) and virus genes (PA, PB1, PB2, HA) were decreased.</td> </tr> </table>	Cell Line:	Virus-infected A549 cells	Concentration:	100 µg/ml	Incubation Time:	24 hours	Result:	The expression of host genes (MAN2A2, POLR2A) and virus genes (PA, PB1, PB2, HA) were decreased.
Cell Line:	Virus-infected A549 cells								
Concentration:	100 µg/ml								
Incubation Time:	24 hours								
Result:	The expression of host genes (MAN2A2, POLR2A) and virus genes (PA, PB1, PB2, HA) were decreased.								

REFERENCES

[1]. Yan W, et al. Eleutheroside B1 mediates its anti-influenza activity through POLR2A and N-glycosylation. Int J Mol Med. 2018 Nov;42(5):2776-2792.

Caution: Product has not been fully validated for medical applications. For research use only.

Tel: 609-228-6898

Fax: 609-228-5909

E-mail: tech@MedChemExpress.com

Address: 1 Deer Park Dr, Suite Q, Monmouth Junction, NJ 08852, USA