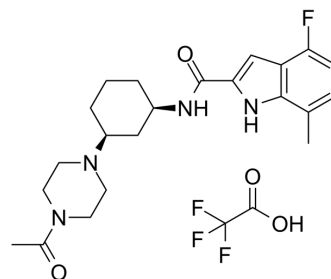


## EZM0414 TFA

<b>Cat. No.:</b>	HY-136328
<b>CAS No.:</b>	2411759-92-5
<b>Molecular Formula:</b>	C <sub>24</sub> H <sub>30</sub> F <sub>4</sub> N <sub>4</sub> O <sub>4</sub>
<b>Molecular Weight:</b>	514.51
<b>Target:</b>	Histone Methyltransferase
<b>Pathway:</b>	Epigenetics
<b>Storage:</b>	4°C, sealed storage, away from moisture * In solvent : -80°C, 2 years; -20°C, 1 year (sealed storage, away from moisture)



### SOLVENT & SOLUBILITY

#### In Vitro

DMSO : 200 mg/mL (388.72 mM; Need ultrasonic)  
H<sub>2</sub>O : 6.67 mg/mL (12.96 mM; ultrasonic and warming and heat to 60°C)

Preparing Stock Solutions	Solvent Concentration	Mass		
		1 mg	5 mg	10 mg
	1 mM	1.9436 mL	9.7180 mL	19.4360 mL
	5 mM	0.3887 mL	1.9436 mL	3.8872 mL
	10 mM	0.1944 mL	0.9718 mL	1.9436 mL

Please refer to the solubility information to select the appropriate solvent.

#### In Vivo

- Add each solvent one by one: 10% DMSO >> 40% PEG300 >> 5% Tween-80 >> 45% saline  
Solubility: ≥ 5 mg/mL (9.72 mM); Clear solution
- Add each solvent one by one: 10% DMSO >> 90% (20% SBE-β-CD in saline)  
Solubility: ≥ 5 mg/mL (9.72 mM); Clear solution
- Add each solvent one by one: 10% DMSO >> 90% corn oil  
Solubility: ≥ 5 mg/mL (9.72 mM); Clear solution

### BIOLOGICAL ACTIVITY

#### Description

EZM0414 TFA is a potent, selective and orally active inhibitor of SETD2 which is a human histone methyltransferase. EZM0414 TFA has anti-proliferative effects<sup>[1]</sup>.

#### IC<sub>50</sub> & Target

SETD2<sup>[1]</sup>

### CUSTOMER VALIDATION

- 
- Cell Stem Cell. 2023 Apr 6;30(4):450-459.e9.
  - Nat Chem Biol. 2023 Mar 27.
  - Research Square Preprint. 2023 May 26.

See more customer validations on [www.MedChemExpress.com](http://www.MedChemExpress.com)

## REFERENCES

---

[1]. John Lampe, et al. Substituted indoles and methods of use thereof. WO2020037079A1.

---

**Caution: Product has not been fully validated for medical applications. For research use only.**

Tel: 609-228-6898

Fax: 609-228-5909

E-mail: [tech@MedChemExpress.com](mailto:tech@MedChemExpress.com)

Address: 1 Deer Park Dr, Suite Q, Monmouth Junction, NJ 08852, USA