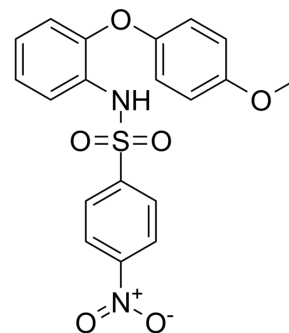


## ERR $\alpha$ antagonist-2

Cat. No.:	HY-144699
Molecular Formula:	C <sub>19</sub> H <sub>16</sub> N <sub>2</sub> O <sub>6</sub> S
Molecular Weight:	400.41
Target:	Estrogen Receptor/ERR
Pathway:	Others
Storage:	Please store the product under the recommended conditions in the Certificate of Analysis.



### BIOLOGICAL ACTIVITY

Description	ERR $\alpha$ antagonist-2 (Compound 11) is a potential ERR $\alpha$ (estrogen related receptor $\alpha$ ) inverse agonist with an IC <sub>50</sub> of 0.80 $\mu$ M. ERR $\alpha$ antagonist-2 suppresses the migration and invasion of the ER-negative MDA-MB-231 cell line. ERR $\alpha$ antagonist-2 inhibits breast cancer growth in vivo <sup>[1]</sup> .
IC <sub>50</sub> & Target	ERR $\alpha$ 0.80 $\mu$ M (IC <sub>50</sub> )

### REFERENCES

[1]. Zhipei Gao, et al. The discovery of a novel series of potential ERR $\alpha$  inverse agonists based on p-nitrobenzenesulfonamide template for triple-negative breast cancer in vivo. J Enzyme Inhib Med Chem. 2022 Dec;37(1):125-134.

**Caution: Product has not been fully validated for medical applications. For research use only.**

Tel: 609-228-6898

Fax: 609-228-5909

E-mail: tech@MedChemExpress.com

Address: 1 Deer Park Dr, Suite Q, Monmouth Junction, NJ 08852, USA