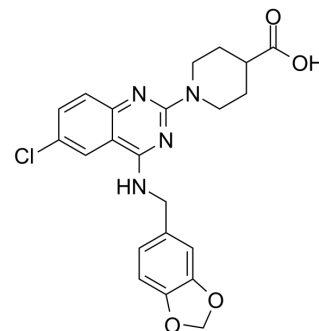


## ER21355

Cat. No.:	HY-101826
CAS No.:	150452-18-9
Molecular Formula:	C <sub>22</sub> H <sub>21</sub> ClN <sub>4</sub> O <sub>4</sub>
Molecular Weight:	440.88
Target:	Phosphodiesterase (PDE)
Pathway:	Metabolic Enzyme/Protease
Storage:	Please store the product under the recommended conditions in the Certificate of Analysis.



## BIOLOGICAL ACTIVITY

### Description

ER21355 is an inhibitor of phosphodiesterase 5 (PDE5), used for treatment of prostatic diseases.

## REFERENCES

[1]. Wolf-Georg Forssmann, et al. Use of phosphodiesterase inhibitors in the treatment of prostatic diseases. US 8106061 B2

**Caution: Product has not been fully validated for medical applications. For research use only.**

Tel: 609-228-6898

Fax: 609-228-5909

E-mail: [tech@MedChemExpress.com](mailto:tech@MedChemExpress.com)

Address: 1 Deer Park Dr, Suite Q, Monmouth Junction, NJ 08852, USA