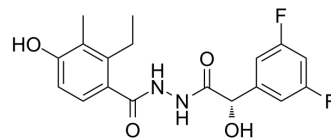


EMD638683 S-Form

Cat. No.:	HY-15193B
CAS No.:	1184940-46-2
Molecular Formula:	C ₁₈ H ₁₈ F ₂ N ₂ O ₄
Molecular Weight:	364.34
Target:	SGK
Pathway:	Metabolic Enzyme/Protease
Storage:	4°C, sealed storage, away from moisture * In solvent : -80°C, 6 months; -20°C, 1 month (sealed storage, away from moisture)



SOLVENT & SOLUBILITY

In Vitro

DMSO : ≥ 100 mg/mL (274.47 mM)
* "≥" means soluble, but saturation unknown.

Preparing Stock Solutions	Solvent Concentration	Mass		
		1 mg	5 mg	10 mg
	1 mM	2.7447 mL	13.7234 mL	27.4469 mL
	5 mM	0.5489 mL	2.7447 mL	5.4894 mL
	10 mM	0.2745 mL	1.3723 mL	2.7447 mL

Please refer to the solubility information to select the appropriate solvent.

In Vivo

- Add each solvent one by one: 10% DMSO >> 40% PEG300 >> 5% Tween-80 >> 45% saline
Solubility: ≥ 2.75 mg/mL (7.55 mM); Clear solution
- Add each solvent one by one: 10% DMSO >> 90% (20% SBE-β-CD in saline)
Solubility: ≥ 2.75 mg/mL (7.55 mM); Clear solution
- Add each solvent one by one: 10% DMSO >> 90% corn oil
Solubility: ≥ 2.75 mg/mL (7.55 mM); Clear solution

BIOLOGICAL ACTIVITY

Description

EMD638683 S-Form is the S-form of EMD638683. EMD638683 is a highly selective SGK1 inhibitor with IC₅₀ of 3 μM.

REFERENCES

[1]. Ackermann TF, et al. EMD638683, a novel SGK inhibitor with antihypertensive potency. Cell Physiol Biochem. 2011;28(1):137-46.

Caution: Product has not been fully validated for medical applications. For research use only.

Tel: 609-228-6898

Fax: 609-228-5909

E-mail: tech@MedChemExpress.com

Address: 1 Deer Park Dr, Suite Q, Monmouth Junction, NJ 08852, USA